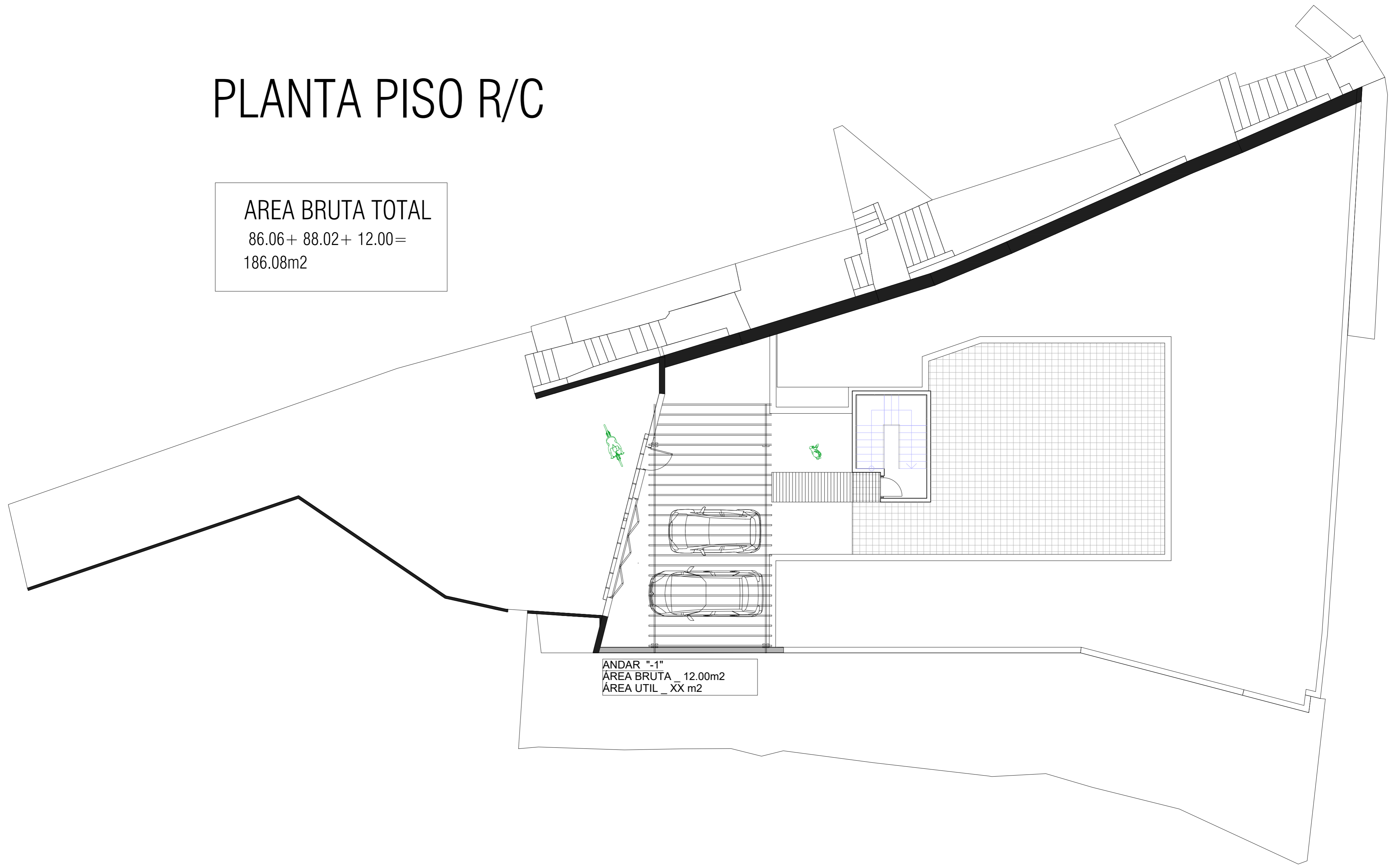


# PLANTA PISO R/C

AREA BRUTA TOTAL

$86.06 + 88.02 + 12.00 =$   
186.08m<sup>2</sup>

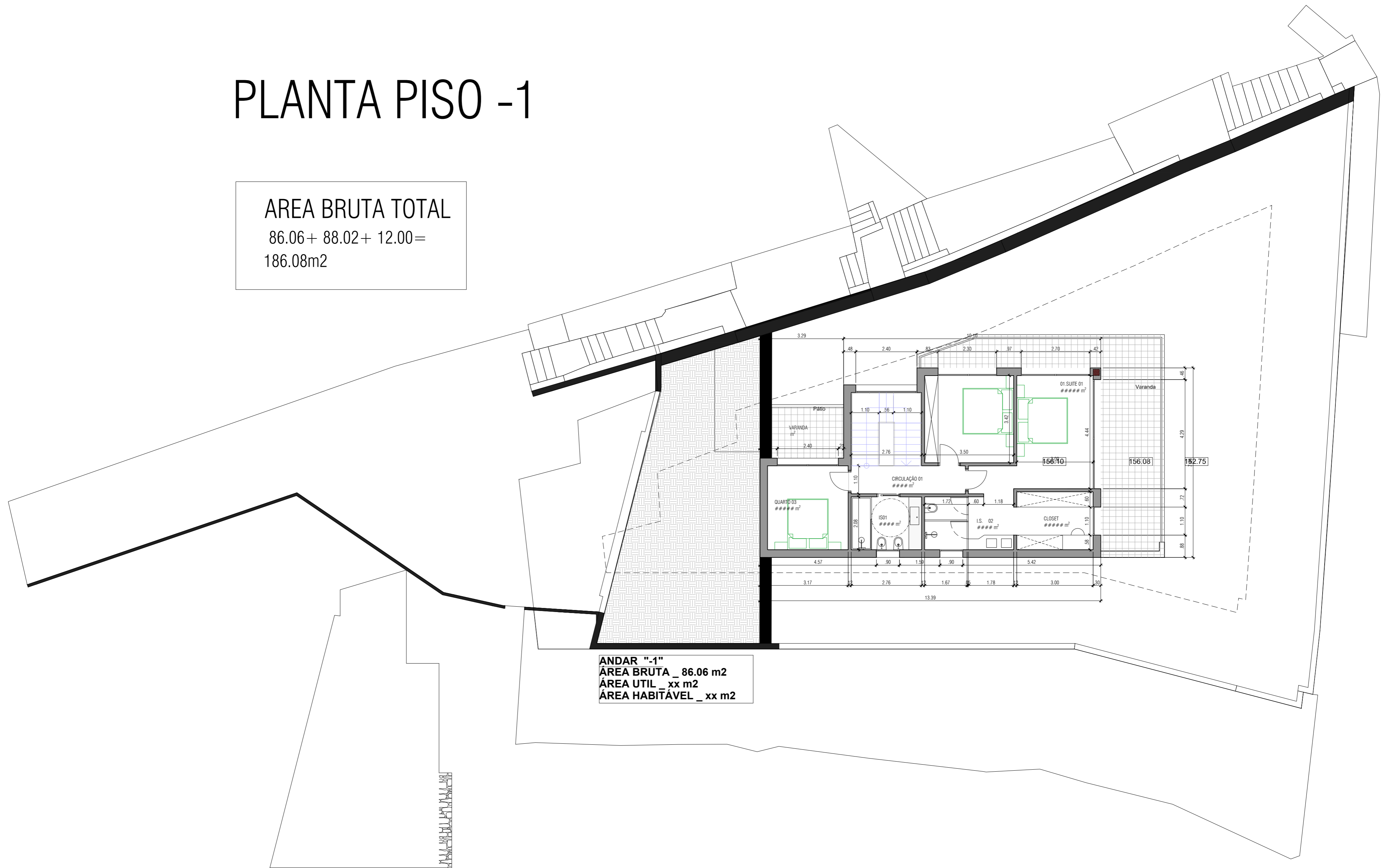


ANDAR "-1"  
ÁREA BRUTA 12.00m<sup>2</sup>  
ÁREA UTIL \_XX m<sup>2</sup>

# PLANTA PISO -1

AREA BRUTA TOTAL

86.06 + 88.02 + 12.00 =  
186.08m<sup>2</sup>

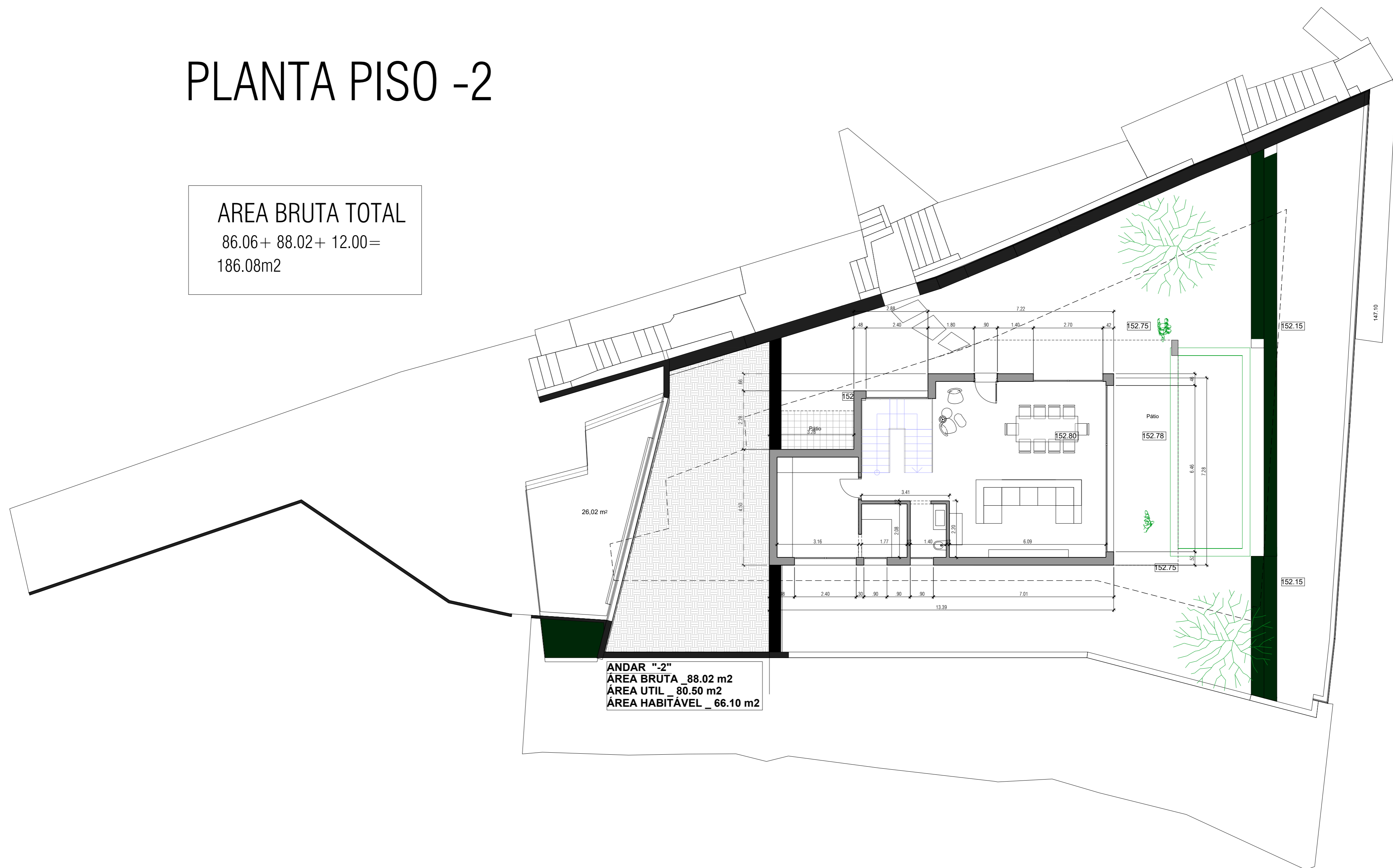


ANDAR "-1"  
ÁREA BRUTA \_ 86.06 m<sup>2</sup>  
ÁREA UTIL \_ xx m<sup>2</sup>  
ÁREA HABITÁVEL \_ xx m<sup>2</sup>

# PLANTA PISO -2

AREA BRUTA TOTAL

86.06 + 88.02 + 12.00 =  
186.08m<sup>2</sup>



**ANDAR "-2"**  
**ÁREA BRUTA 88.02 m<sup>2</sup>**  
**ÁREA UTIL 80.50 m<sup>2</sup>**  
**ÁREA HABITÁVEL 66.10 m<sup>2</sup>**