

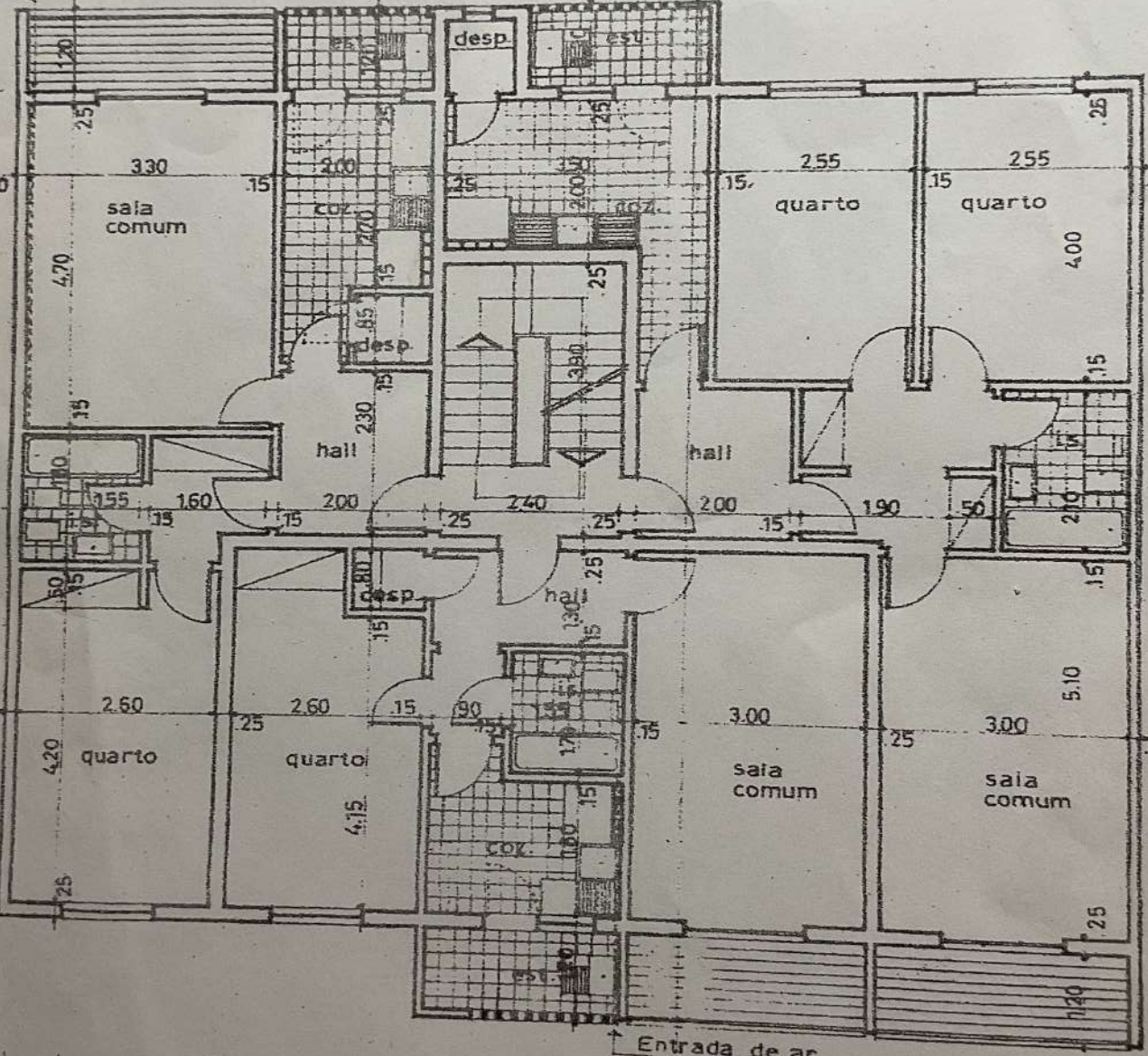


b

15.00

20 90 150 90 190 50 50 50 190 60 70 120 145 120 70 20

de ar



12.00

12.00

20 4.20 2.60 2.60 1.5 90 1.7 1.5 3.00 3.00 5.10 20

Entrada de ar

20 70 120 165 120 70 85 190 15 80 150 75 75 150 80 20

medidas

a

15.00