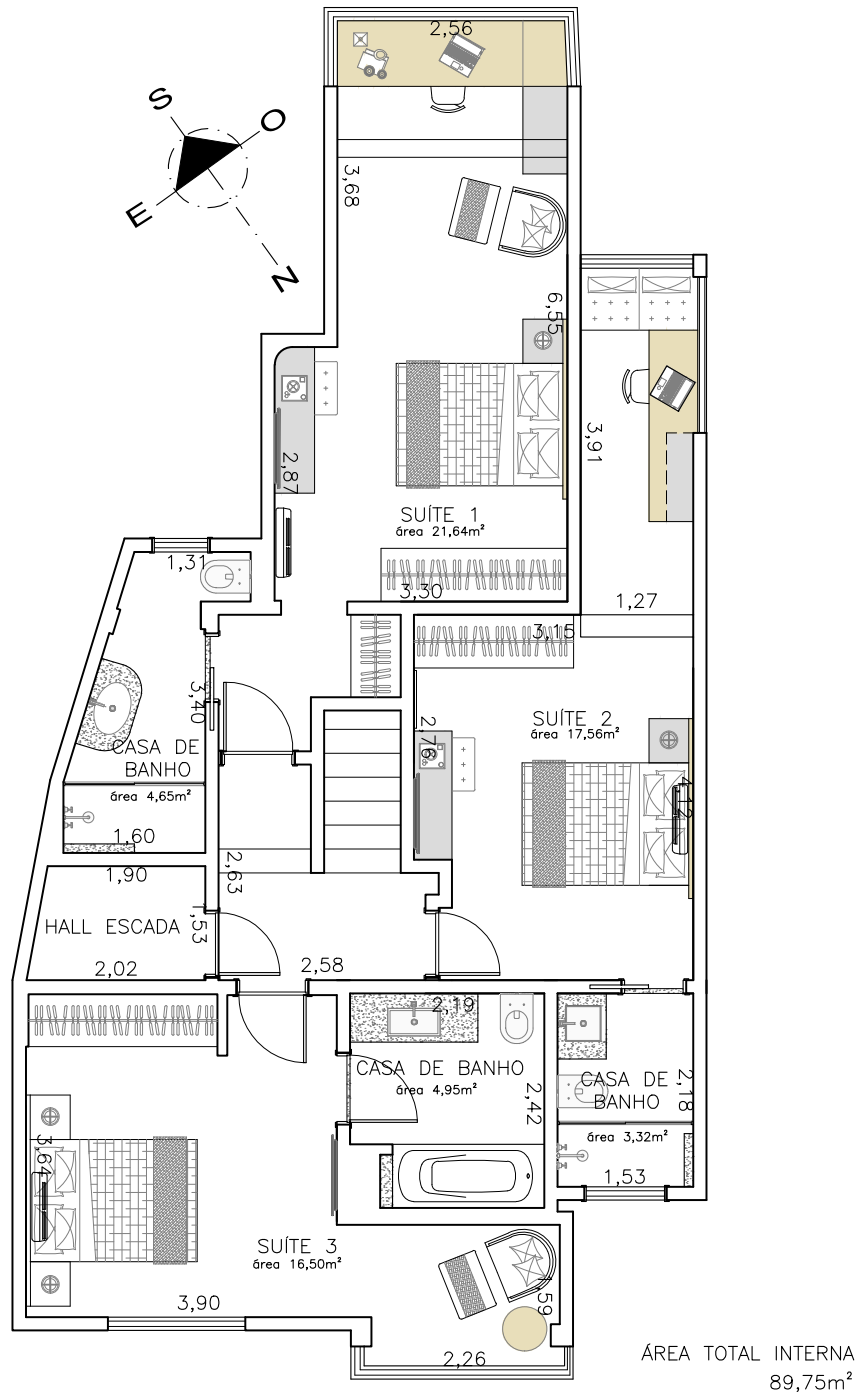


PLANTA LAYOUT - TERCEIRO PISO

esc 1:75

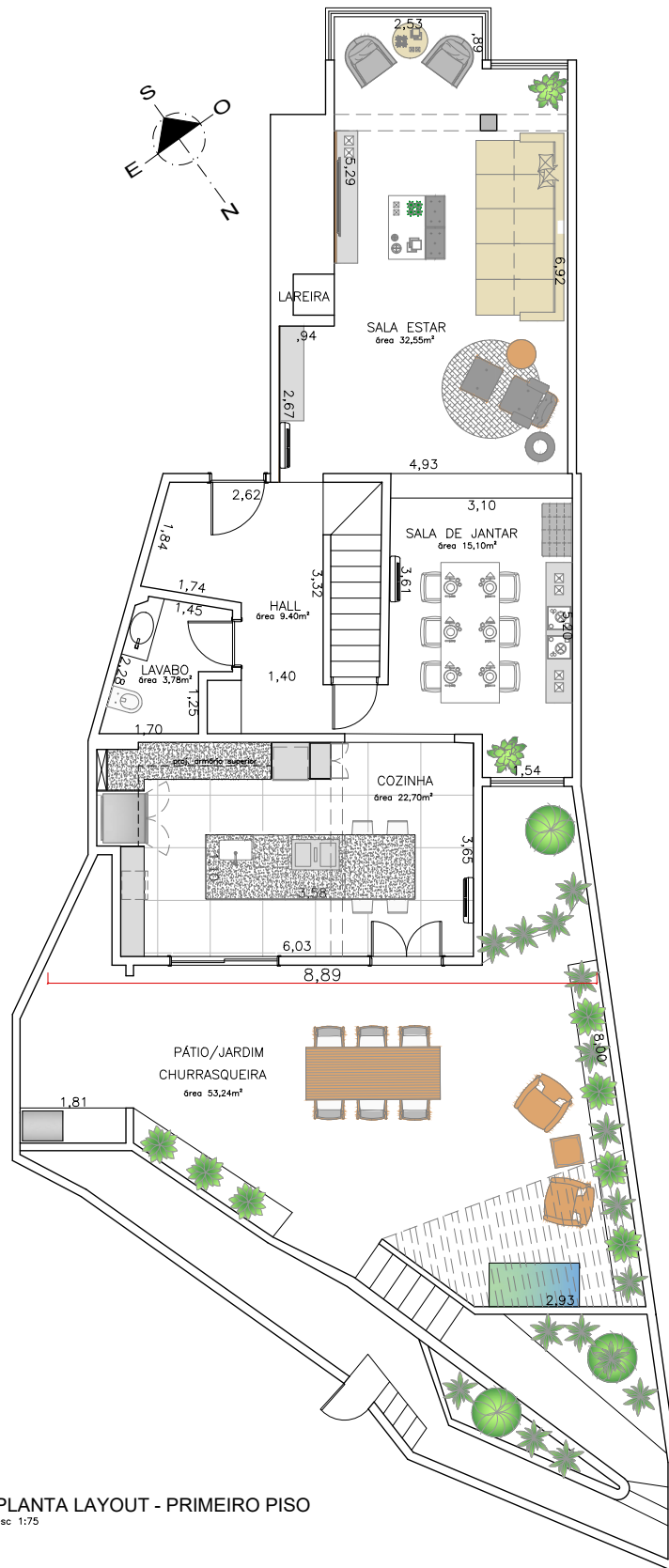
ÁREA TOTAL INTERNA
53,59m²

ÁREA TOTAL EXTERNA
19,91m²



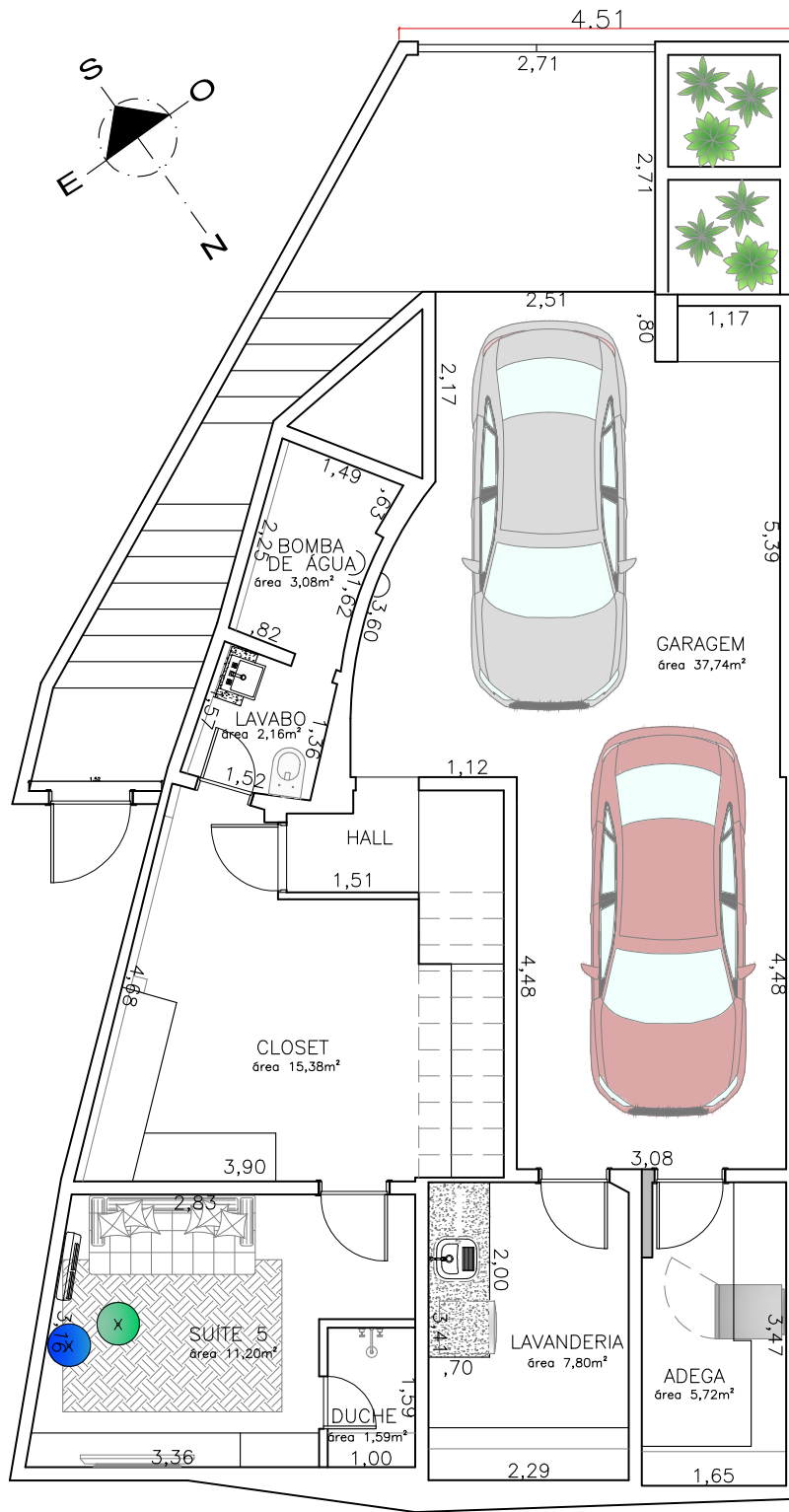
PLANTA LAYOUT - SEGUNDO PISO

esc 1:75



PLANTA LAYOUT - PRIMEIRO PISO
esc 1:75

ÁREA TOTAL INTERNA
100,62m²
ÁREA TOTAL EXTERNA
82,20m²



ÁREA TOTAL INTERNA
101,31m²
ÁREA TOTAL EXTERNA
23,85m²

PLANTA LAYOUT - CAVE

esc 1:75