

GOLDEN WHITE VILLAGE

(V4+1)

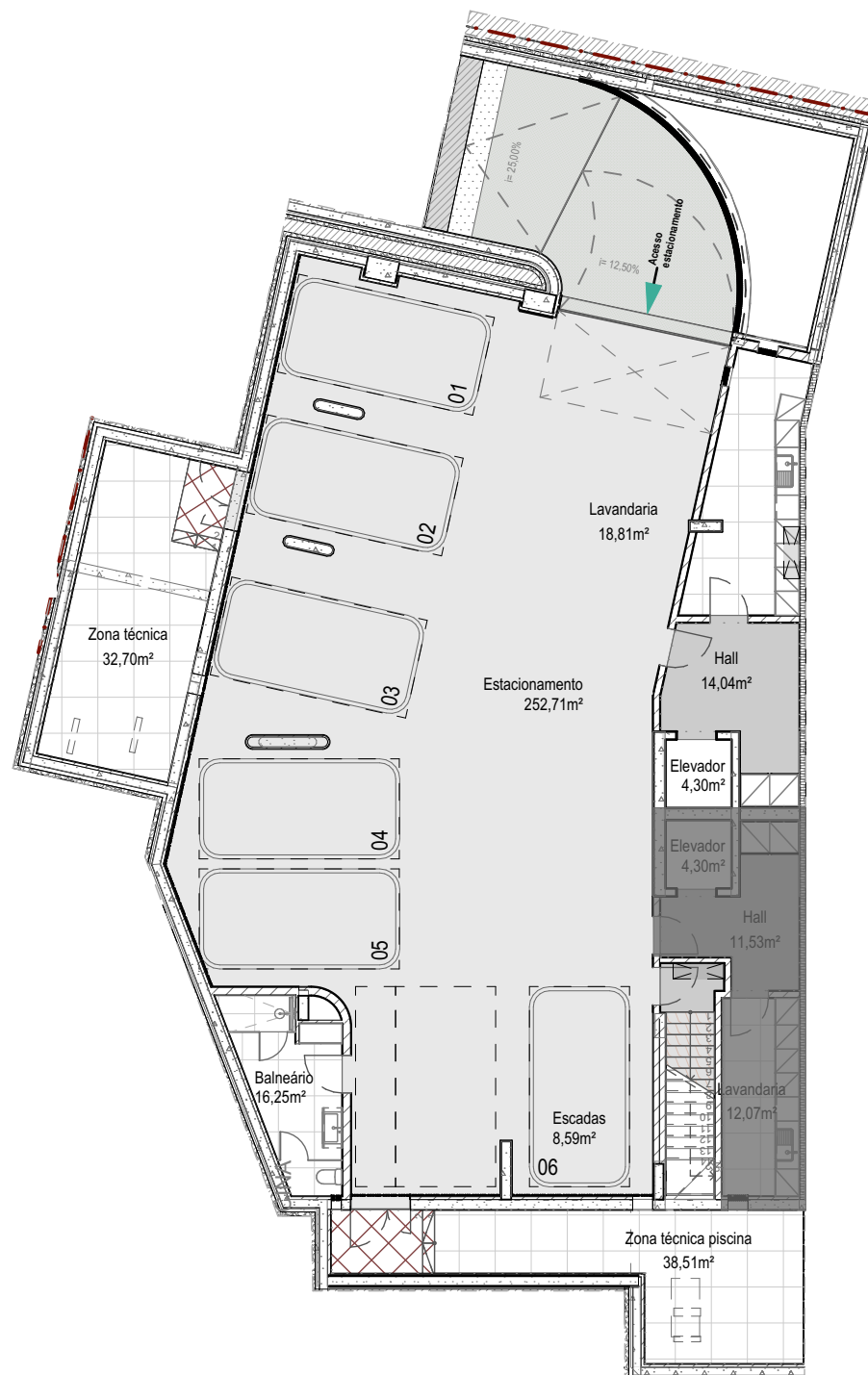
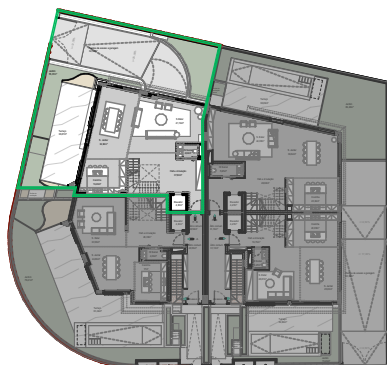
657-Vila Irene e Vila Etelvina

Piso -1

Área bruta privativa - 69,85m²

Área bruta dependente - 138,79m²

3 estacionamentos





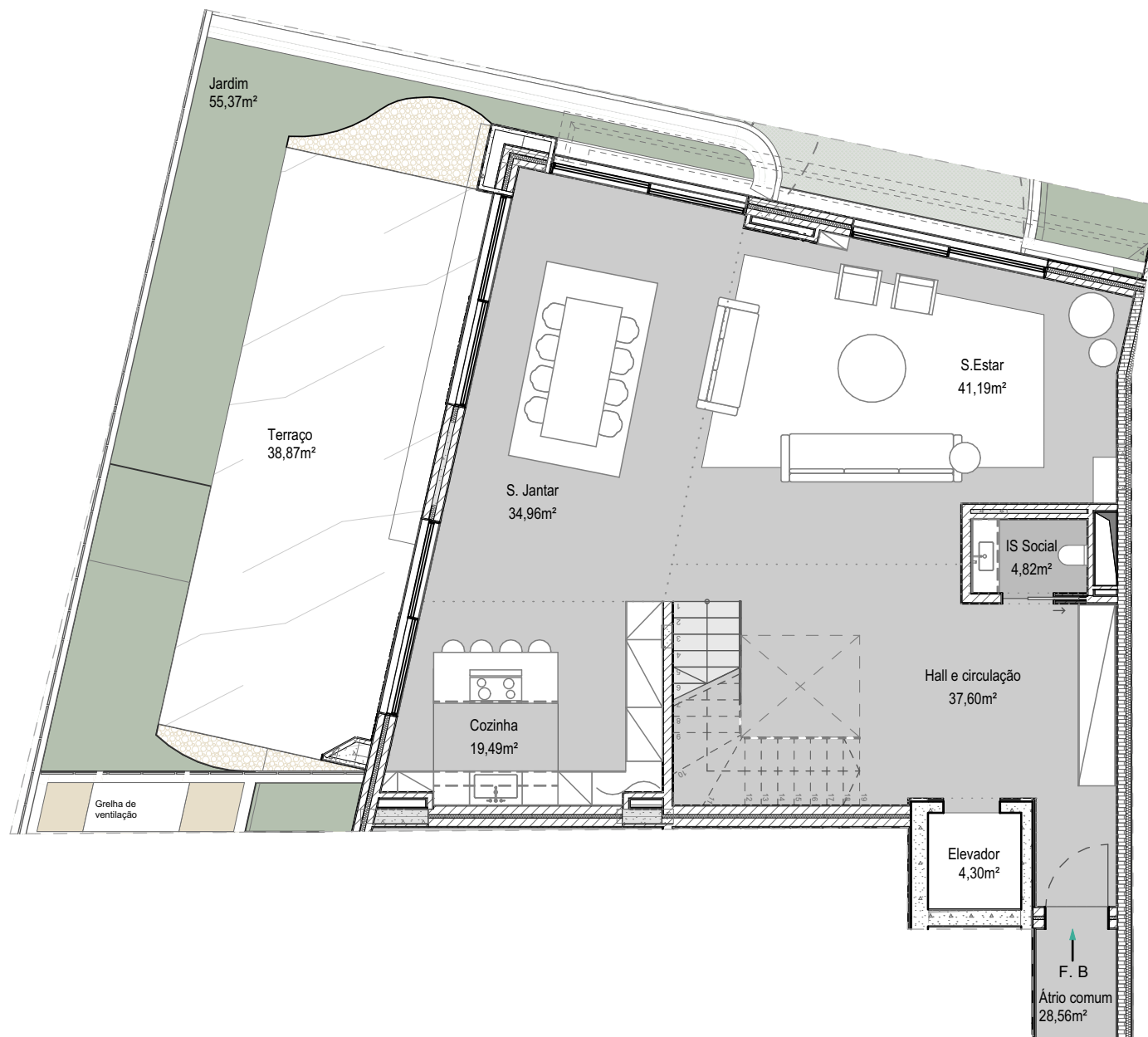
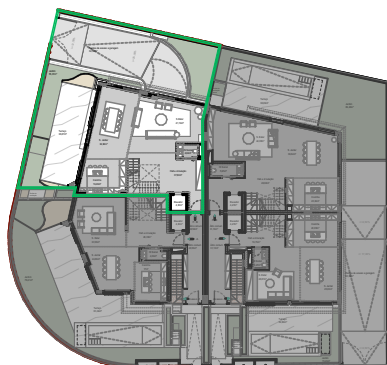
GRUPO
LOURENÇO
& LOUSADA

GOLDEN WHITE VILLAGE

657-Vila Etelvina (V4 +1)
Piso 0

Área bruta privativa - 142,36 m²
Área bruta dependente - 14,78m²

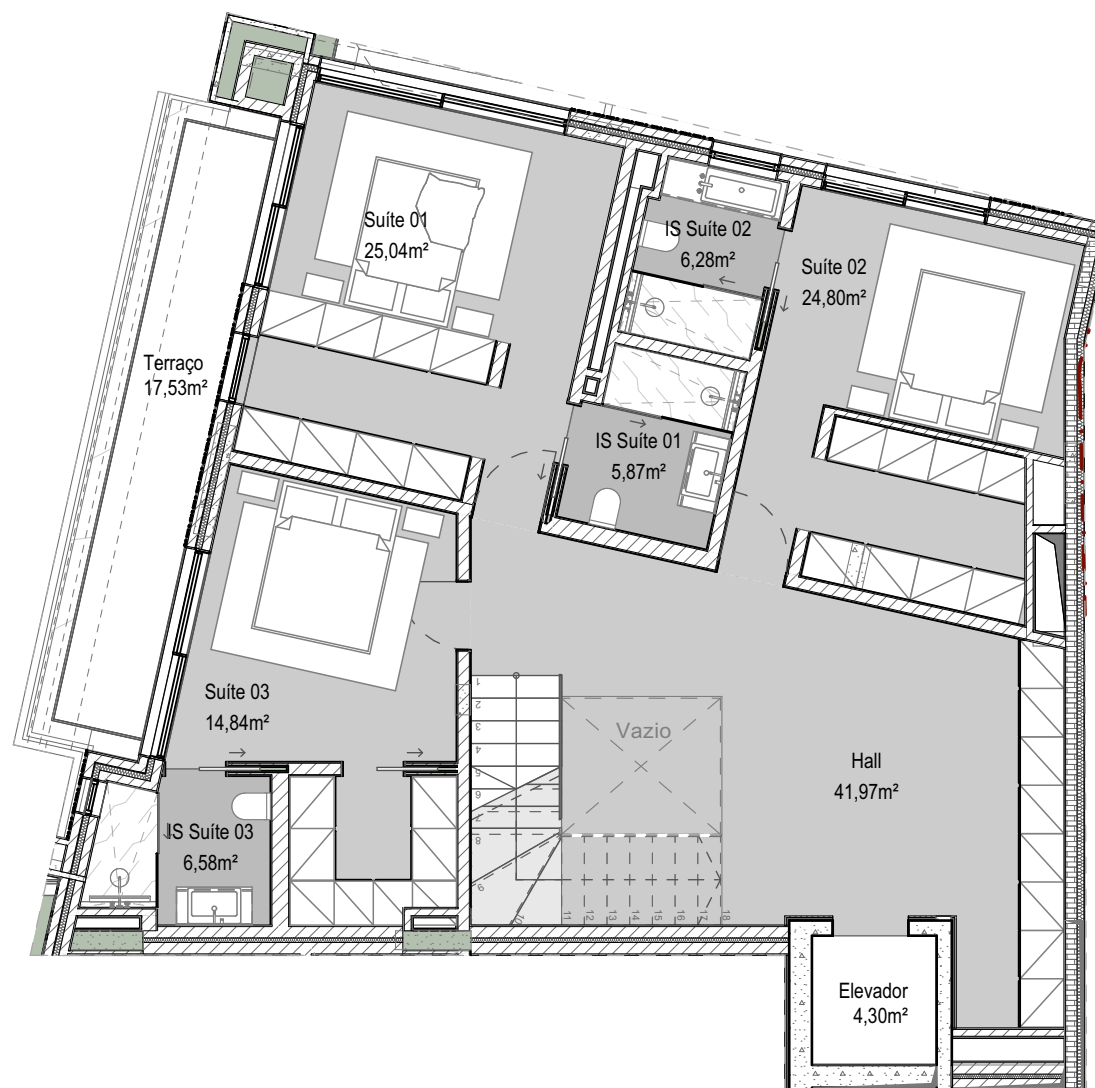
Jardim - 55,37m



GOLDEN WHITE VILLAGE

657-Vila Etelvina (V4 +1)
Piso 1

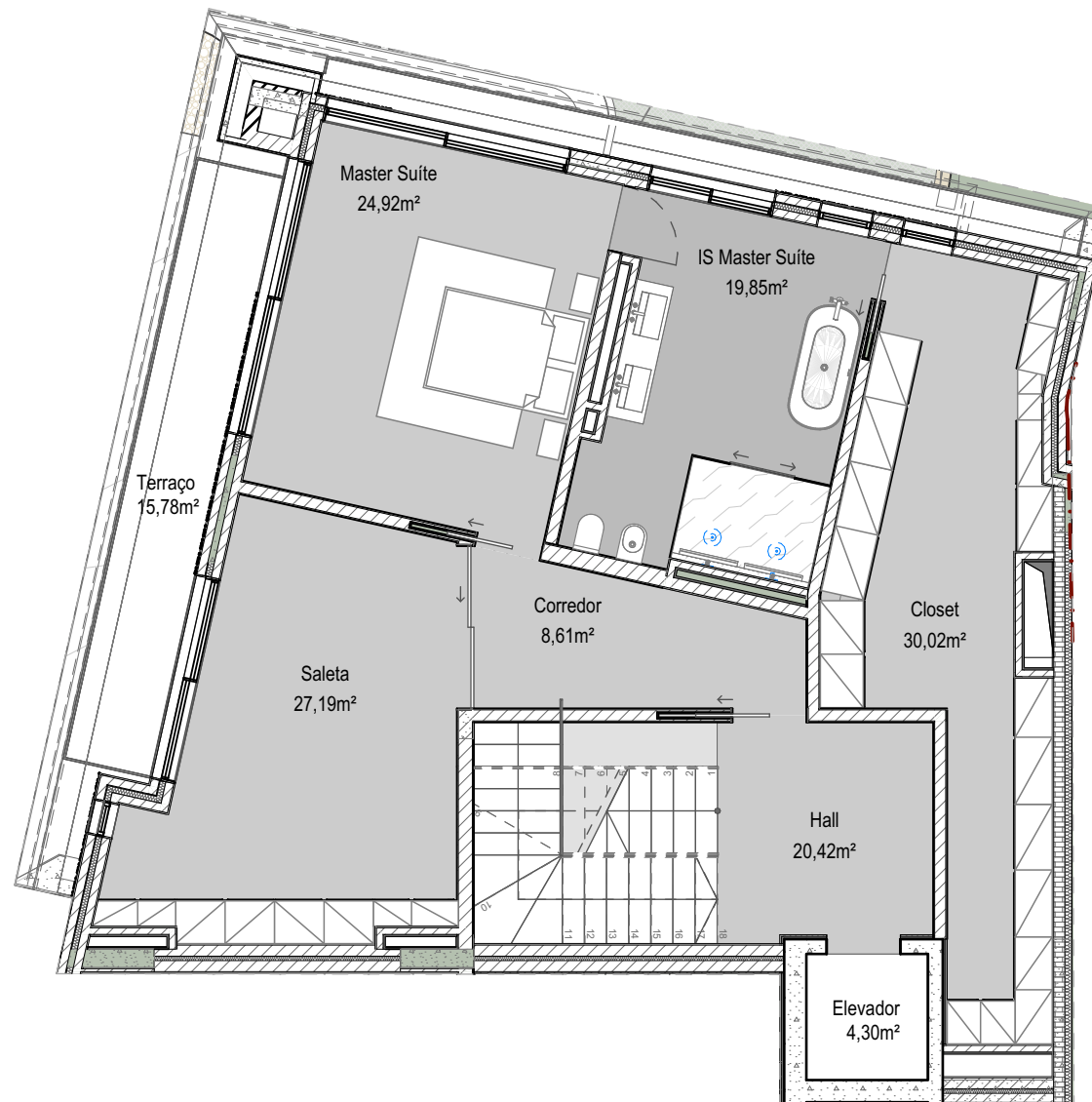
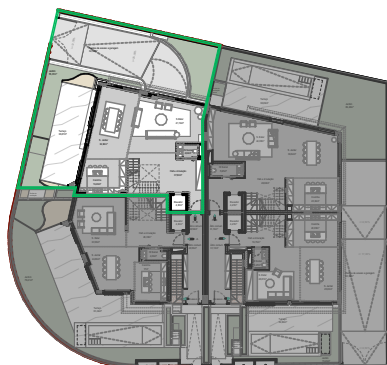
Área bruta privativa - 129,68 m²
Área bruta dependente - 17,53m²



GOLDEN WHITE VILLAGE

657-Vila Etelvina (V4 +1)
Piso 2

Área bruta privativa - 135,31m²
Área bruta dependente - 15,78m²



GOLDEN WHITE VILLAGE

657-Vila Etelvina (V4 +1)
Piso 3

Área bruta privativa - 74,29m²
Área bruta dependente - 170,95m²

