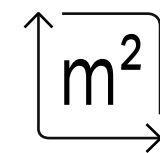
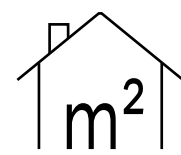


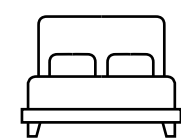
## PISO -1 FLOOR -1



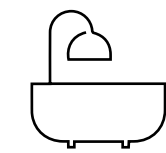
**2.425 M2**  
ÁREA TERRENO  
SITE AREA



**2.304 M2**  
ÁREA TOTAL DE CONSTRUÇÃO  
TOTAL CONSTRUCTION AREA



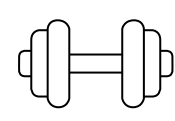
**6**  
NÚMERO DE SUITES  
NUMBER OF SUITES



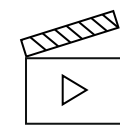
**10**  
NÚMERO DE I.S.  
NUMBER OF BATHROOMS



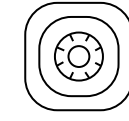
Spa  
Spa



Ginásio  
Gym



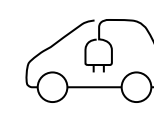
Sala de Cinema  
Home Cinema



Cofre  
Panic Room  
Safe  
Panic Room



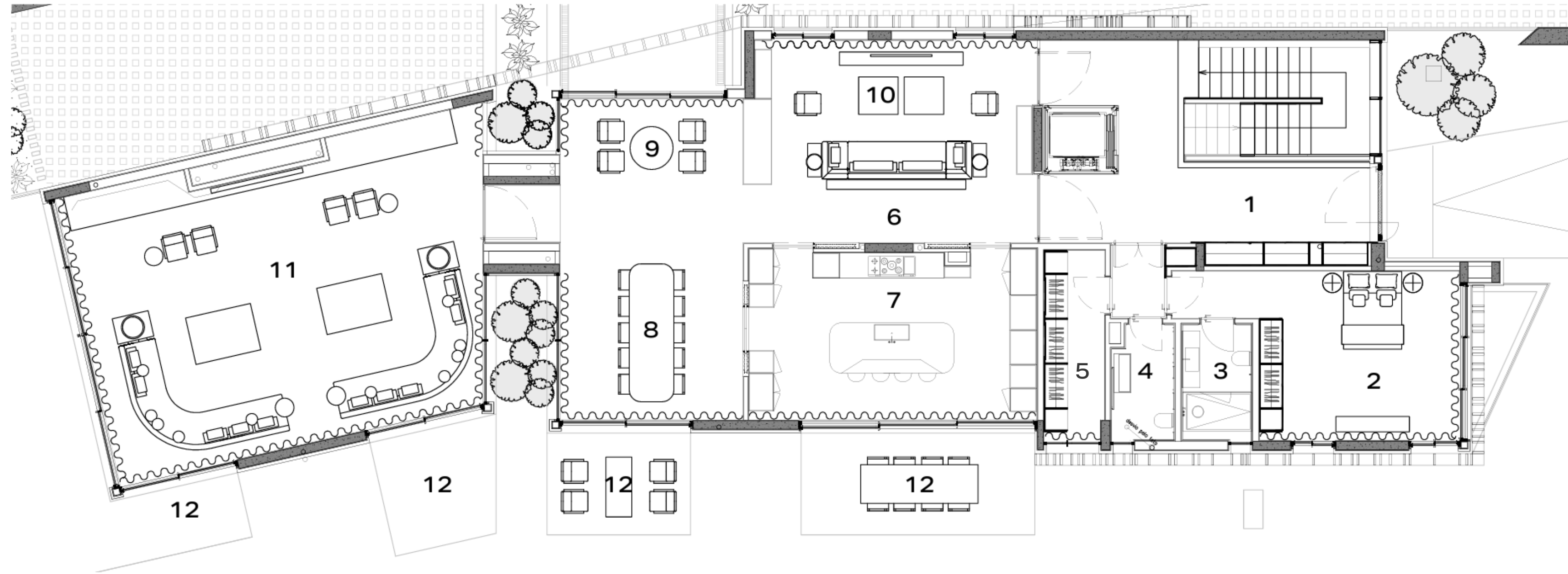
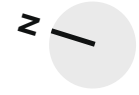
6 Lugares de  
estacionamento  
6 parking spot



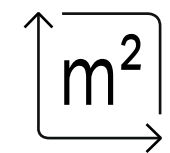
3 Carregadores  
Elétricos  
3 Electric chargers

### ÁREAS AREAS

<b>1. Piscina Interior</b> Indoor Pool	52,8 m2	<b>9. Escritório</b> Office	13,4 m2
<b>2. Ginásio, Sauna e Banho Turco</b> Gym, Sauna and Turkish Bath	45,4 m2	<b>10. Lavandaria</b> Laundry	18,2 m2
<b>3. I.S. de apoio ao ginásio</b> Gym Bathroom	2,2 m2	<b>11. Suite</b> Suite	20,9 m2
<b>4. Garagem</b> Garage	173,3 m2	<b>12. I.S. Suite</b> Suite Bathroom	5,3 m2
<b>5. Closet - Open closet</b> Closet - Open closet	12,9 m2	<b>13. Sala Cinema</b> Home Cinema	38,0 m2
<b>6. Cofre / Panic Room</b> Safe / Panic Room	5,4 m2	<b>14. Circulação</b> Circulation Space	53,2 m2
<b>7. Sala de Massagens</b> Massage Room	17,3 m2	<b>15. Pátio com jardim</b> Garden Patio	5,5 m2
<b>8. I.S. Social</b> Social Bathroom	2,2 m2	<b>16. Áreas técnicas</b> Service Areas	19,9 m2



## PISO 0 FLOOR 0

 **2.425 M2**  
ÁREA TERRENO  
SITE AREA

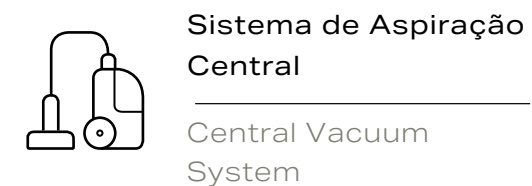
 **2.304 M2**  
ÁREA TOTAL DE CONSTRUÇÃO  
TOTAL CONSTRUCTION AREA

 **6**  
NÚMERO DE SUITES  
NUMBER OF SUITES

 **10**  
NÚMERO DE I.S.  
NUMBER OF BATHROOMS

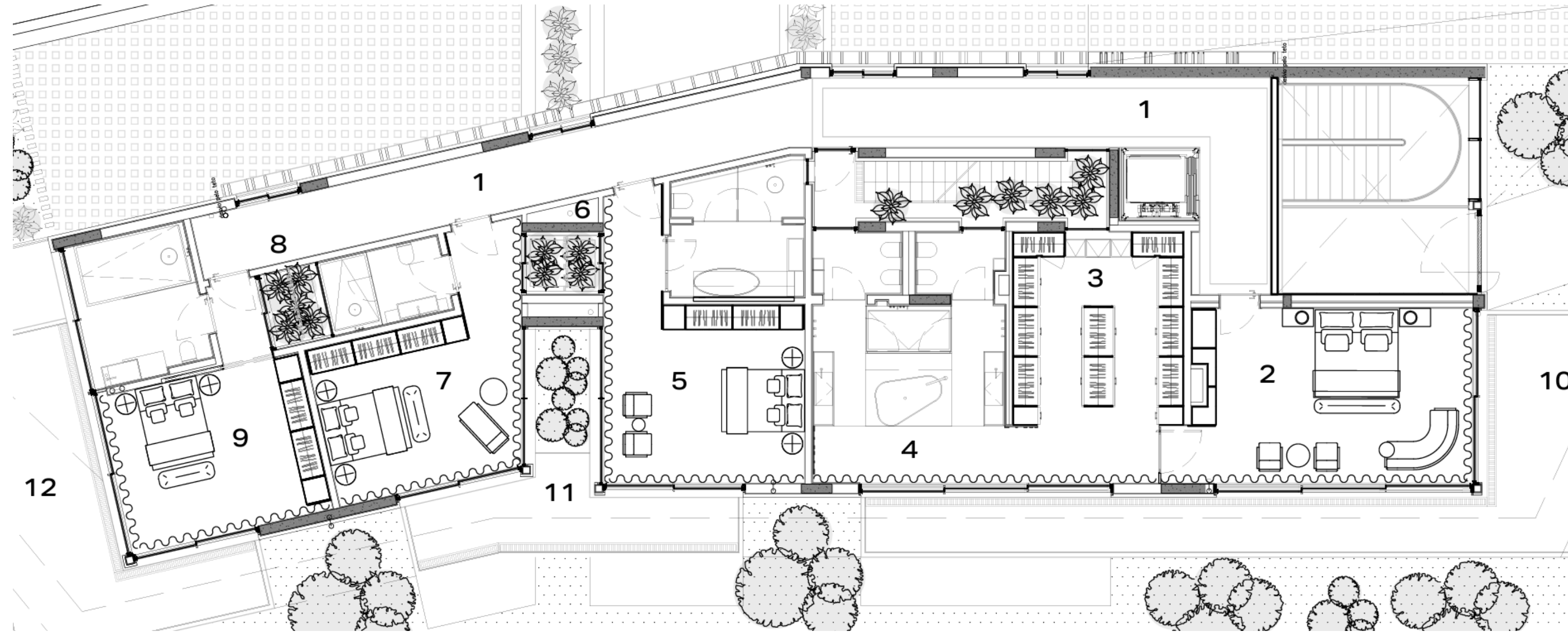
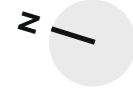
### ÁREAS AREAS

<b>1. Átrio de entrada - Circulação</b> Entrance Hall - Circulation	17,9 m2	<b>9. Sala Informal I - Zona de Vinhos</b> Informal Living Room - Wine Tasting Area	25,5 m2
<b>2. Suite de Visitas</b> Guest Suite	34,2 m2	<b>10. Sala Informal II - Zona de Estar</b> Informal Living Room	44,4 m2
<b>3. I.S. Suite de Visitas</b> Guest Suite Bathroom	7,5 m2	<b>11. Sala Formal - Salão</b> Formal Living Room	92,3 m2
<b>4. I.S. Social</b> Social Bathroom	7,0 m2	<b>12. Terraços exteriores</b> Outdoor Terraces	274,1 m2
<b>5. Arrumo - Bengaleiro</b> Storage - Coat Closet	9,7 m2		
<b>6. Hall - Circulação</b> Circulation Hall	3,3 m2		
<b>7. Cozinha</b> Kitchen	36,7 m2		
<b>8. Sala de Jantar</b> Dining Room	24,6 m2		

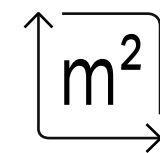




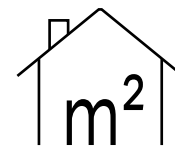
# The Special One, Gandarinha



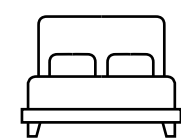
## PISO 1 FLOOR 1



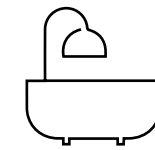
**2.425 M2**  
ÁREA TERRENO  
SITE AREA



**2.304 M2**  
ÁREA TOTAL DE CONSTRUÇÃO  
TOTAL CONSTRUCTION AREA



**6**  
NÚMERO DE SUITES  
NUMBER OF SUITES



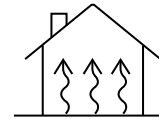
**10**  
NÚMERO DE I.S.  
NUMBER OF BATHROOMS

### ÁREAS AREAS

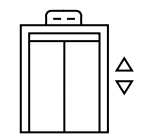
<b>1. Átrio de distribuição</b> Circulation Hall	103,1 m2	<b>9. Suite 1</b> Suite 1	39,4 m2
<b>2. Master Suite</b> Master Suite	35,4 m2	<b>10. Terraço de apoio à Master Suite</b> Master Suite private terrace	36,7 m2
<b>3. Closet Master Suite</b> Master Suite Closet	28,1 m2	<b>11. Terraço de apoio às Suites 2 e 3</b> Suite 2 and 3 private terrace	14,4 m2
<b>4. I.S. Master Suite</b> Master Suite Bathroom	32,3 m2	<b>12. Terraço de apoio à Suite 1</b> Suite 1 private terrace	31,4 m2
<b>5. Suite 3</b> Suite 3	41,3 m2		
<b>6. Pátio II exterior</b> Outdoor Patio II	5,5 m2		
<b>7. Suite 2</b> Suite 2	31,3 m2		
<b>8. Pátio I exterior</b> Outdoor Patio I	3,0 m2		



Vista Mar  
Ocean View



Aquecimento por  
pavimento radiante  
Underfloor Heating



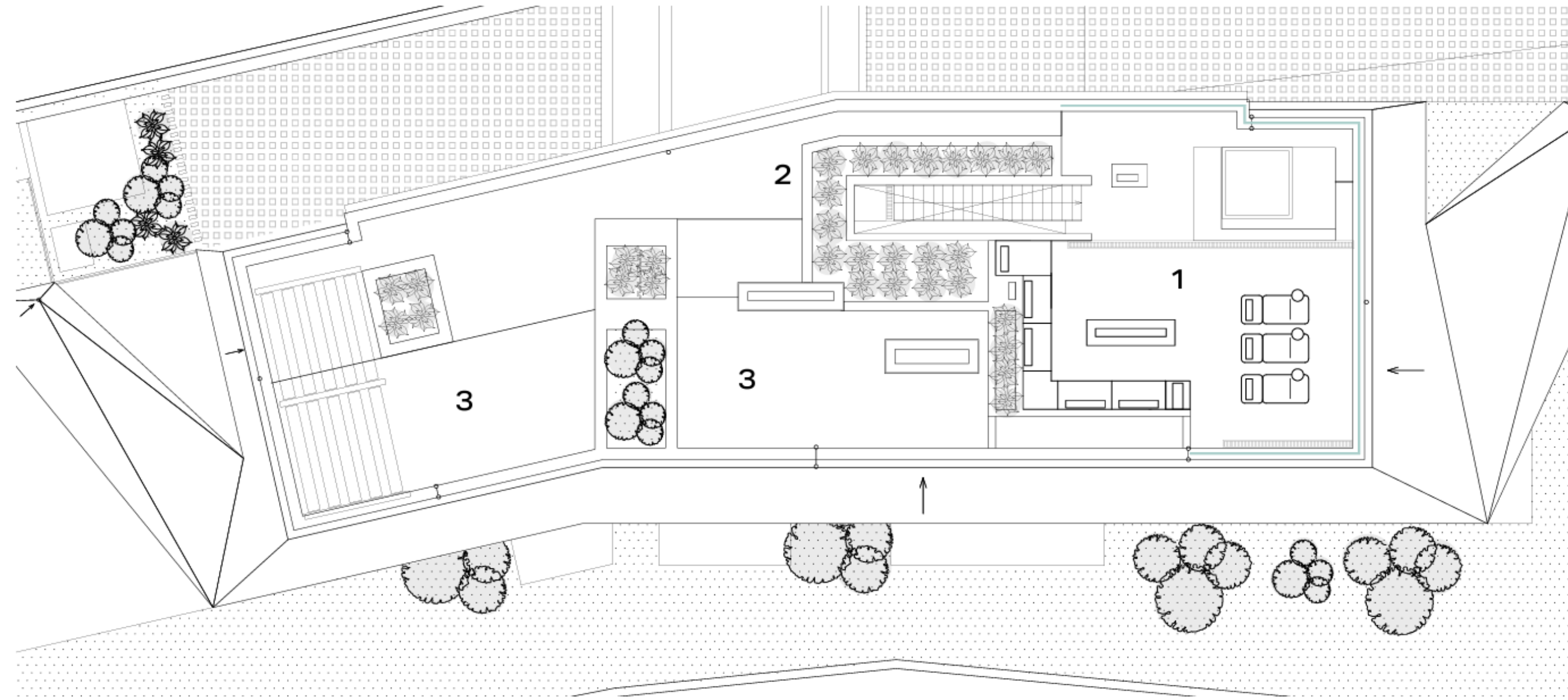
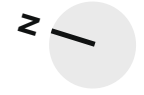
Elevador em Vidro  
Glass Elevator



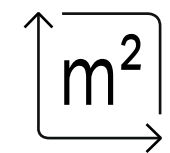
Domótica Integrada  
Integrated home  
automation



Climatização  
inteligente  
Smart climate  
control



## PISO COBERTURA ROOFTOP

 **2.425 M2**  
ÁREA TERRENO  
SITE AREA

 **2.304 M2**  
ÁREA TOTAL DE CONSTRUÇÃO  
TOTAL CONSTRUCTION AREA

 **6**  
NÚMERO DE SUITES  
NUMBER OF SUITES

 **10**  
NÚMERO DE I.S.  
NUMBER OF BATHROOMS

### ÁREAS AREAS

<b>1. Zona de Estar, Solário e Jacuzzi</b> Lounge Area, Solarium and Jacuzzi	96,7 m2
<b>2. Floreira</b> Planter	24,5 m2
<b>3. Zona Técnica</b> Technical Area	154,0 m2

