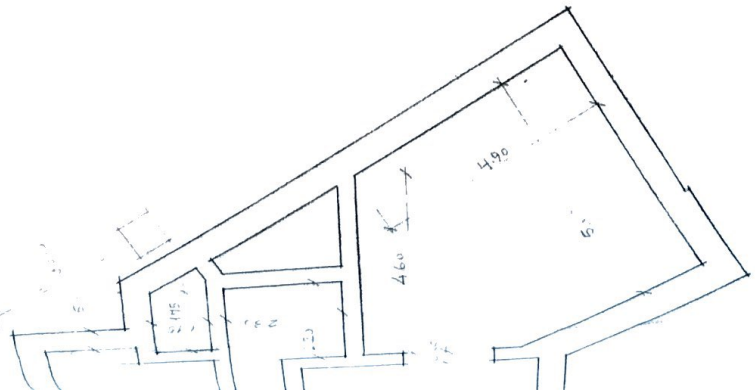


REC. RIVIA

MO. SIRELLI

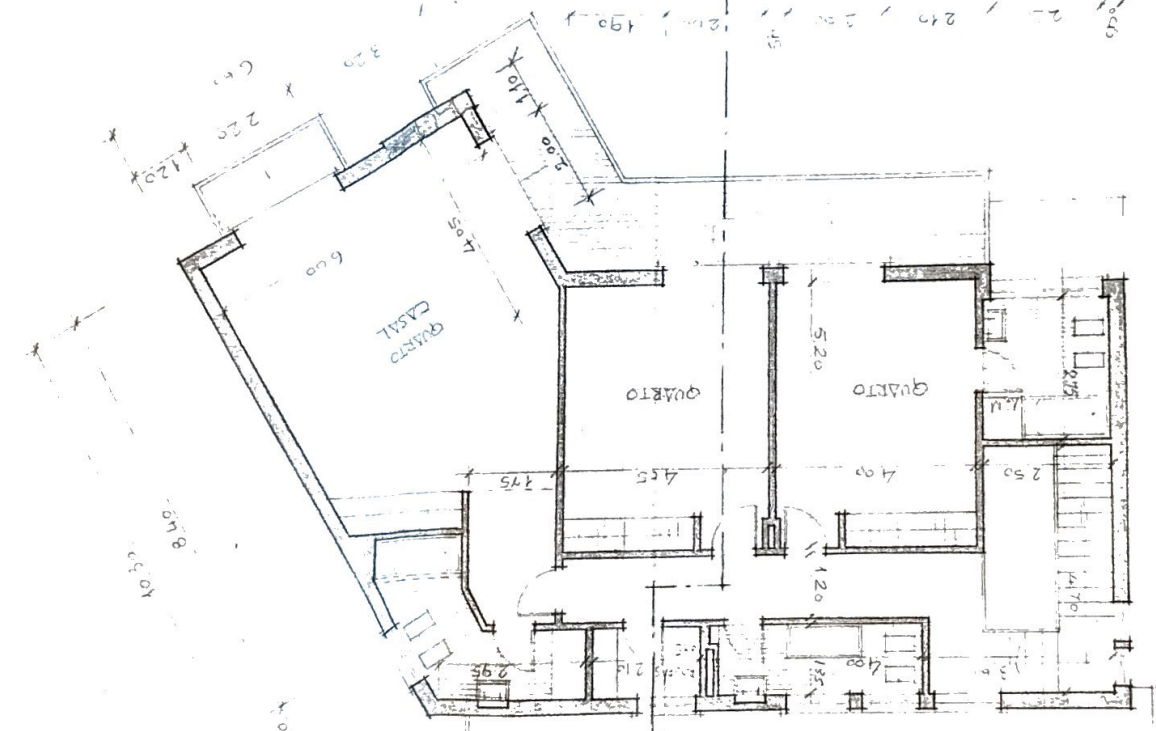


RICHAO

154,69 42

C. GONCALVES

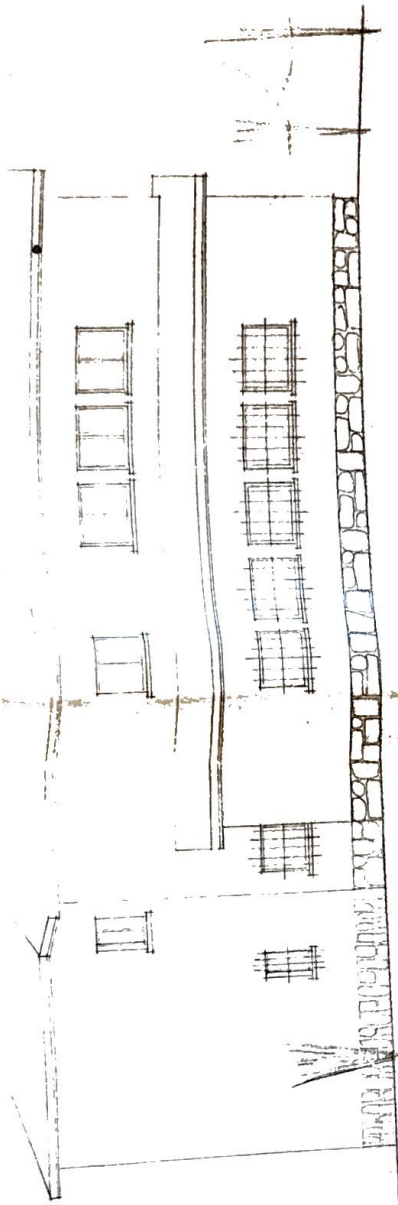
1º ANDAR



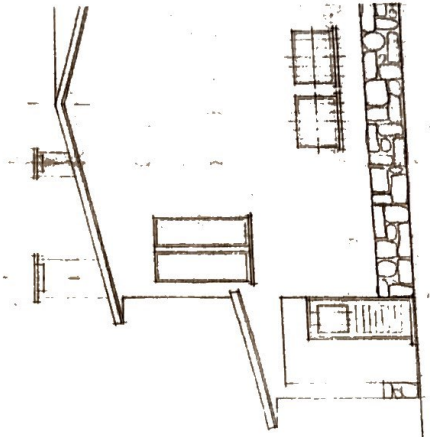
REQUERIMIENTOS
 00998
 28 JAN 1967
 PARA MUNICIPAL DE ENCOCAIS



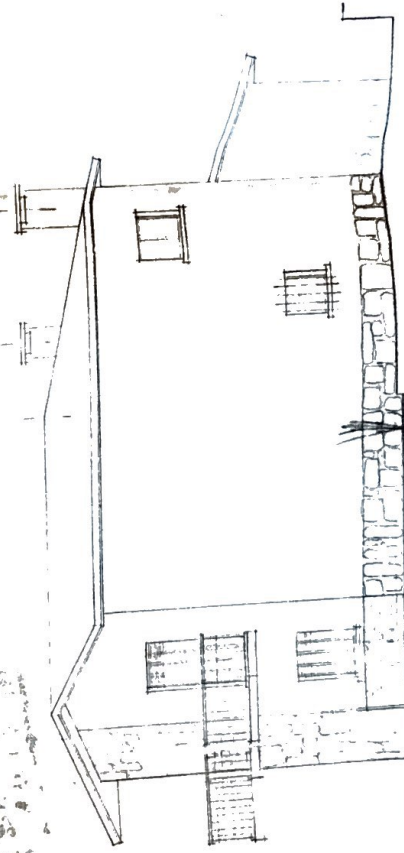
ESCALA 1/10



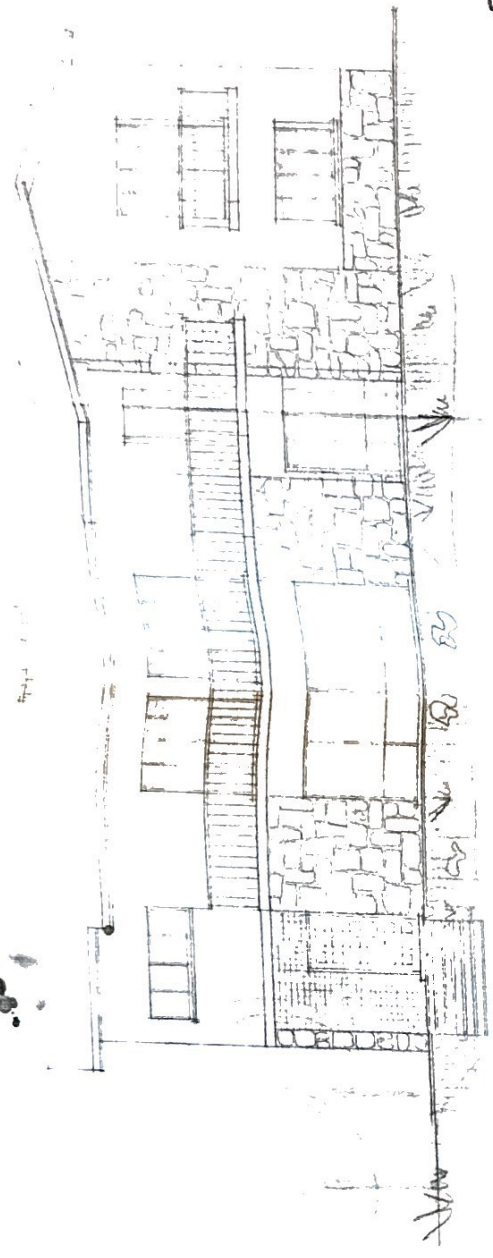
ALÇADO NORTE



ALÇADO ORIENTE

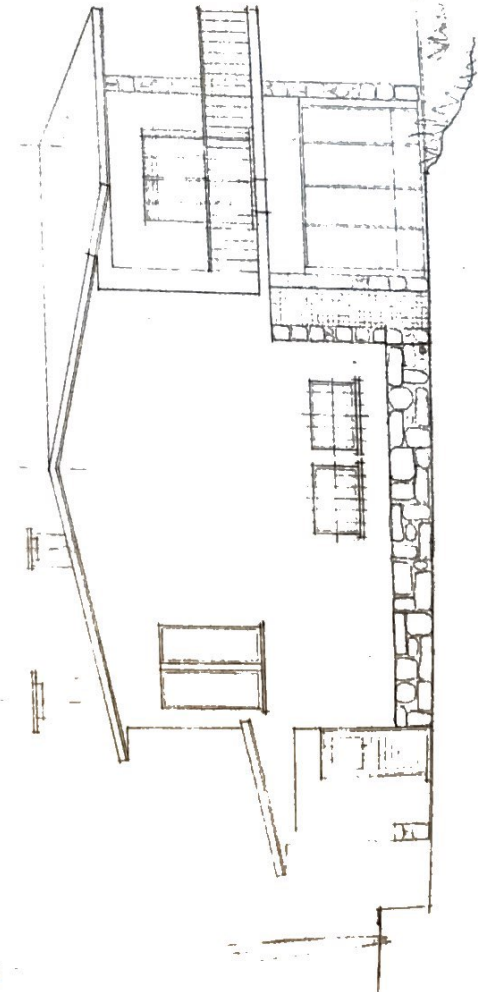


ALÇADO NASCENTE

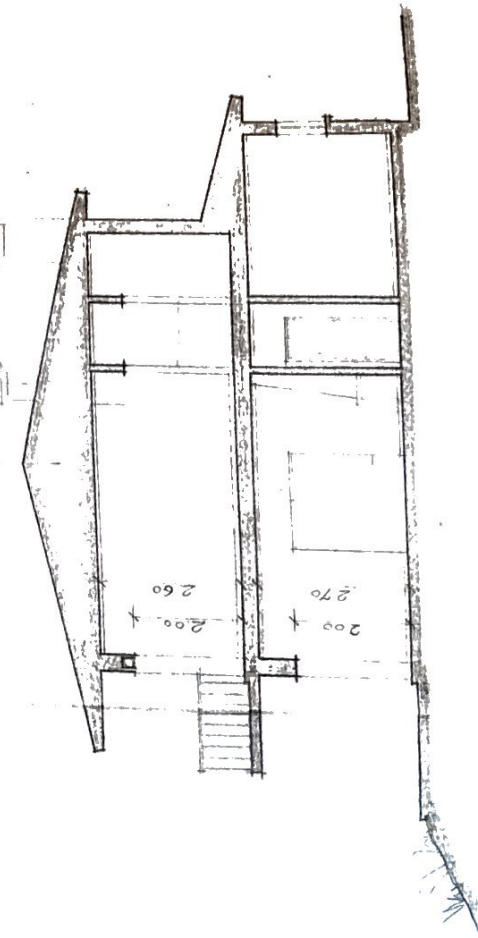


ALGADO SUL

SECRETARIA MUNICIPAL DE CASAS
E OBRAS
EXPOS. 25 JAN 1967
REQUERIMIENTOS



ALGADO PONTE

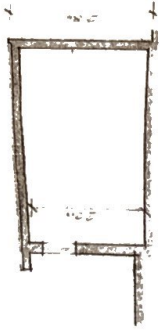
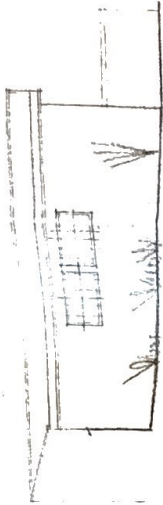
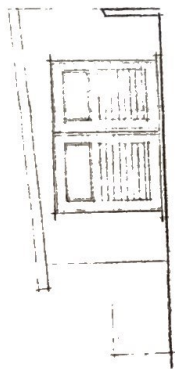


CORTE AB.

SECRETARIA MUNICIPAL DE CASAS
E OBRAS

SAIALEM

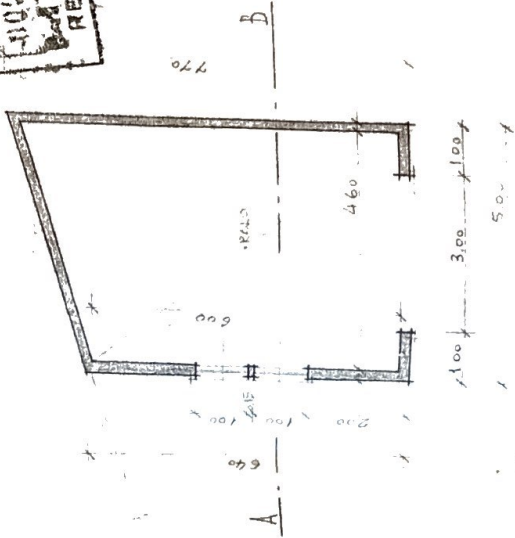
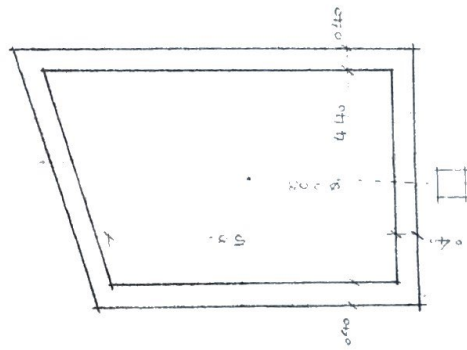
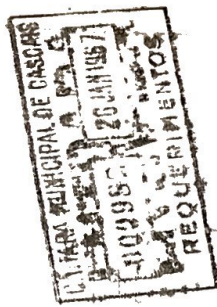
ESCALA 1/10



ALÇADO POINTE

ALÇADO NORTE

CORTE A-B



FUNDAÇÕES

PLANTA

C. CONTINUAÇÃO

35,25 M²