



CASAS AMARELAS

SETE CIDADES, AZORES



Executive Summary

LEGAL NOTICE: The information contained in this document is indicative as it may be subject to change. This information does not constitute a contract, part of a contract or warranty.

Location: Sete Cidades, São Miguel Island, Azores;

Property: Casas Amarelas – set of two buildings with a total area of 6,300 sqm, with three buildings.

Project: Rehabilitation of Casas Amarelas, with conversion into an accommodation unit.



LOCATION



The Azores Archipelago is made up of 9 islands, grouped into 3 groups, Western, Central and Eastern, and has approximately 236,000 inhabitants, with around 80% residing on the Islands of São Miguel and Terceira.





The island of São Miguel, with an area of 759 km² and around 133,000 inhabitants, where the predominant colors are green and blue, and where nature prevails at all levels, is strategically located in the middle of the Atlantic Ocean, between Europe and the United States of America, where there is a vast community of emigrants, being a destination of choice for this community and for those who want to relax and make the most of what nature and an island can offer.



Natural resources are the brand image, but not only that.

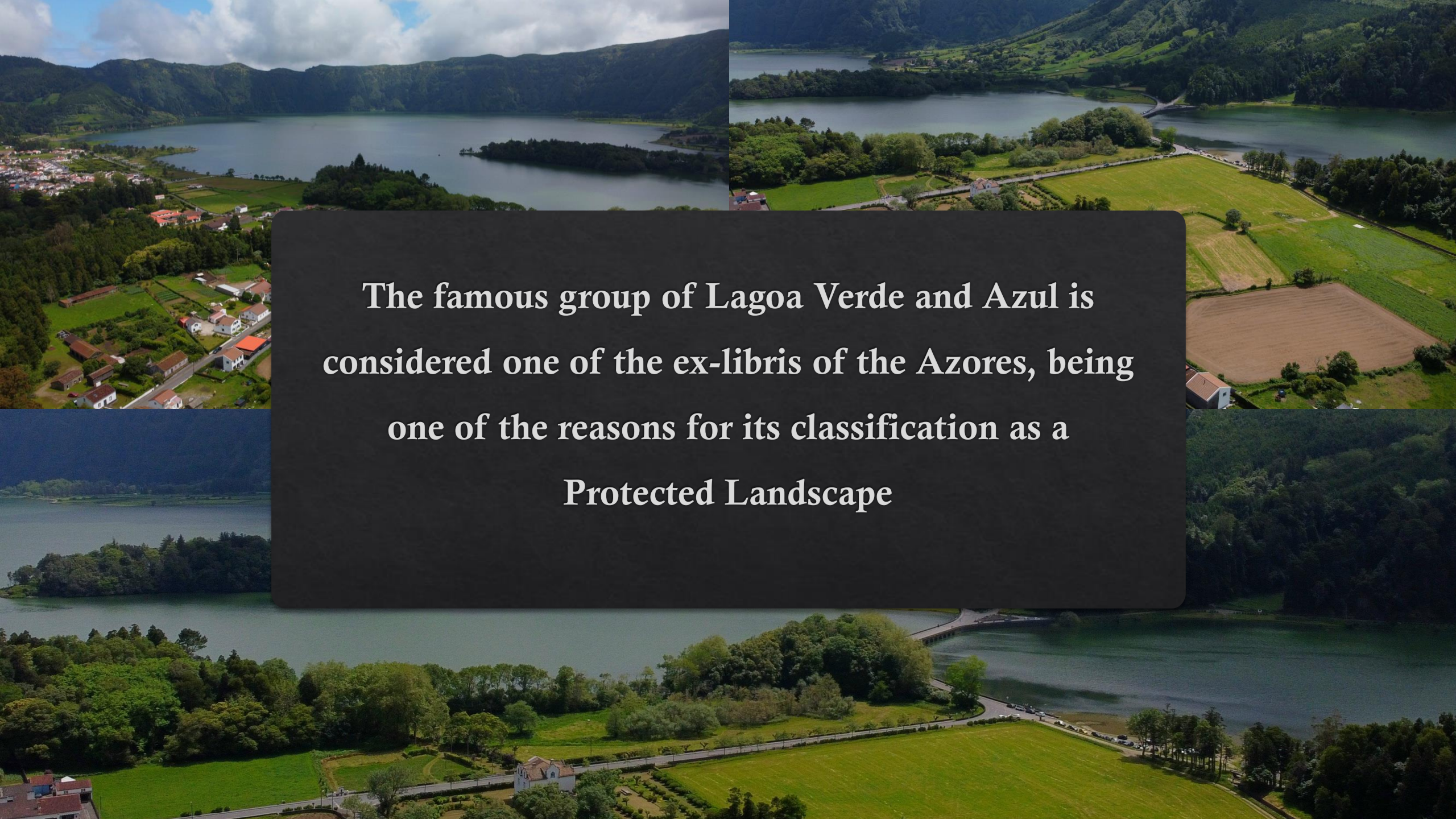
Added to these are the hospitality of its people, its culture and traditions, gastronomy, favorable taxation, security, low cost of living and authenticity.



Sete Cidades - One of the 7 Natural Wonders of Portugal, where the Green and Blue lagoons are located, formed, according to legend, from the tears shed by a shepherd and a princess who lived a forbidden love.



This location, characterized by the complete symbiosis between Man and Nature, constitutes a unit of enormous scenic value, reflecting a strong Azorean identity, through its enormous narrative capacity in terms of geomorphology and the history of land occupation in the archipelago.



The famous group of Lagoa Verde and Azul is considered one of the ex-libris of the Azores, being one of the reasons for its classification as a Protected Landscape

An aerial photograph of a rural property. In the foreground, there are several buildings, including a large white house with a red roof and a smaller brown barn. A paved road runs through the property. To the right, there is a large, tilled brown field. In the middle ground, there are green fields and a road. In the background, a large lake is visible, surrounded by dense green trees and rolling hills. The sky is clear and blue.

The property

Set of two rustic buildings,
with a total area of 6,300
sqm.

Located near Lagoa das Sete
Cidades, at the entrance to
the town.

With three buildings with a
total of approximately 607
sqm of construction area,
surrounded by wooded
garden areas.



Existing areas

Casas Amarelas	Floor -1	Floor 0	Floor 1	Totals
Large House (sqm)	129	129	84	342
Small House (sqm)	0	100	80	180
Warehouse (sqm)	0	85	0	85
Approximate áreas (sqm)				607

Casas Amarelas

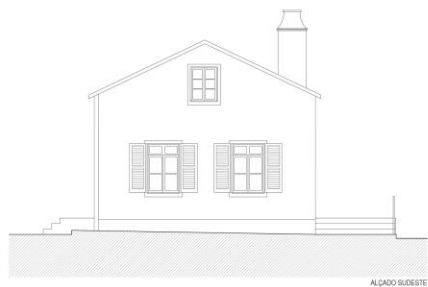
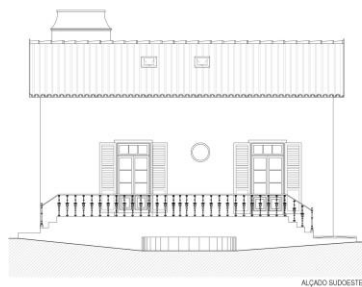
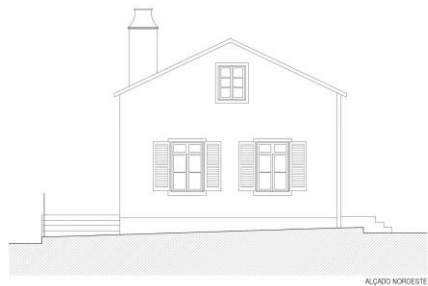
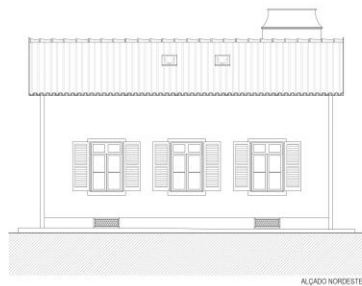




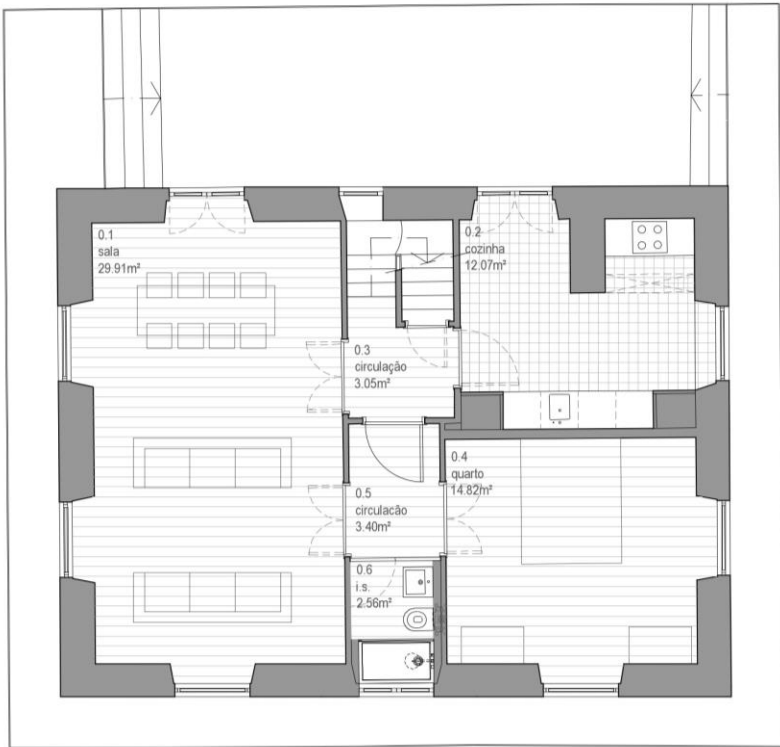


The image features a background of architectural drawings for a house. On the left, there are two elevation drawings of a house with a gabled roof, multiple windows with shutters, and a balcony. The top drawing is labeled 'PROPOSTA' and the bottom one 'PROPOSTA ALÇADO NOROESTE'. In the center, there are two section drawings showing the internal structure of the house, including a staircase and various rooms. The bottom section drawing is labeled 'ALÇADO SUDESTE'. On the right, there are two more elevation drawings of a house, similar in style to the ones on the left. The central text 'The project' is overlaid on a dark, rounded rectangular background.

The project



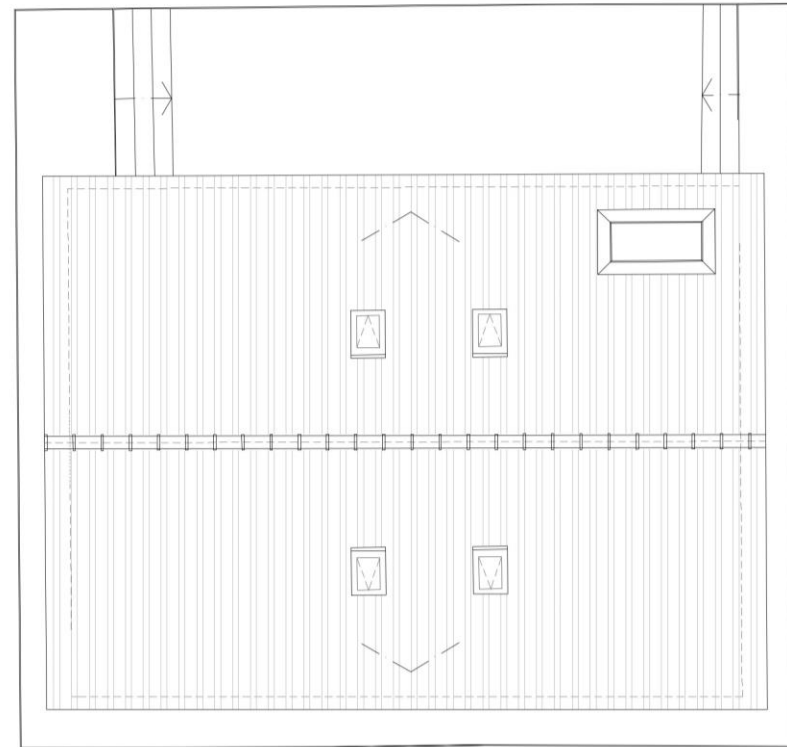
House 1



PLANTA PISO 0

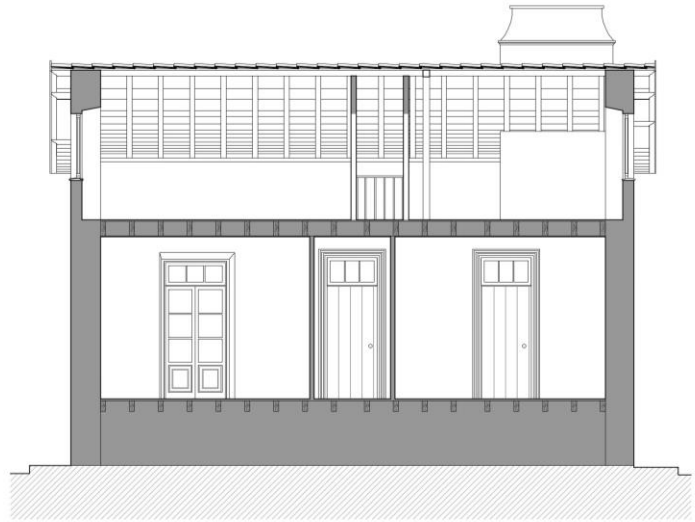


PLANTA PISO 1

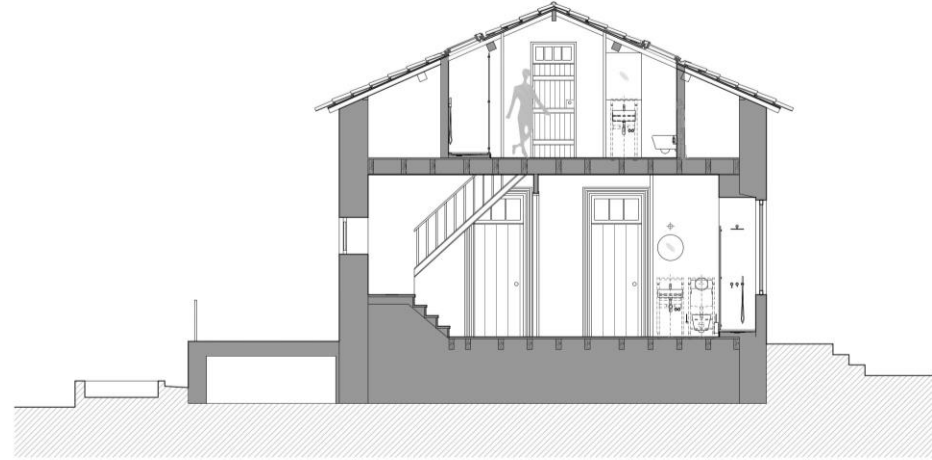


PLANTA DE COBERTURA

Floor Plan



CORTE A

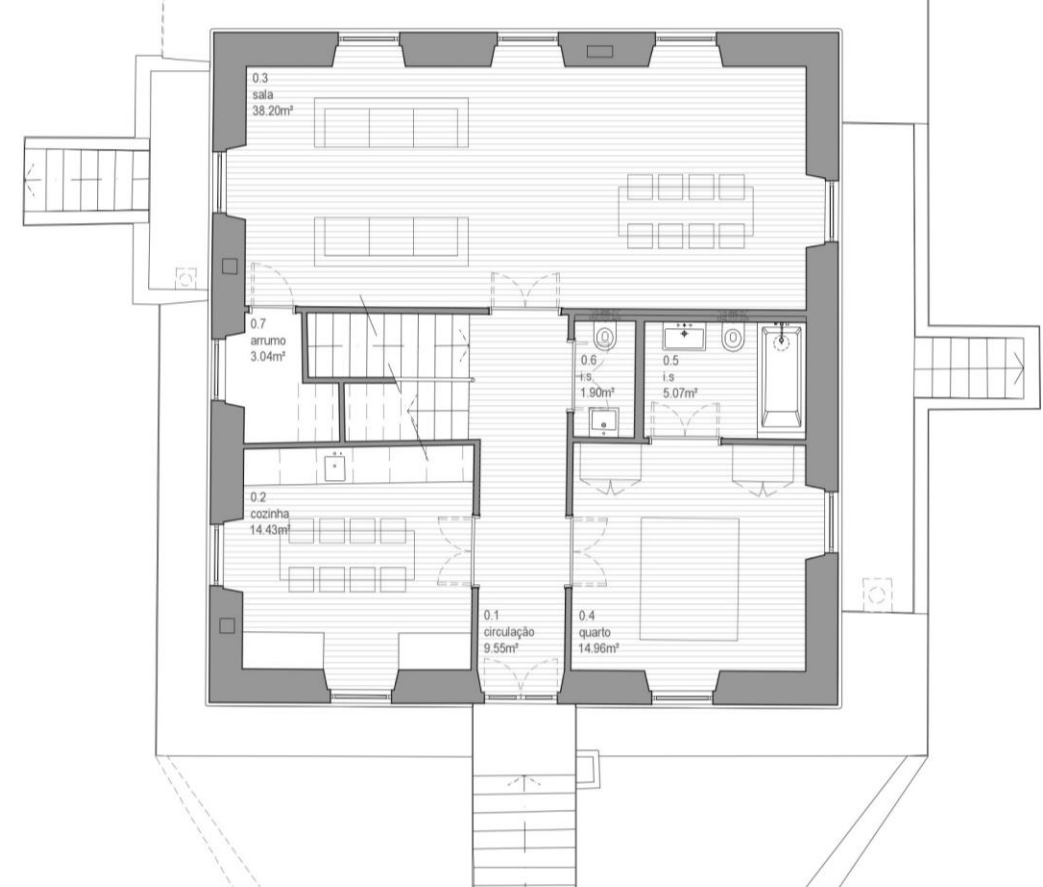
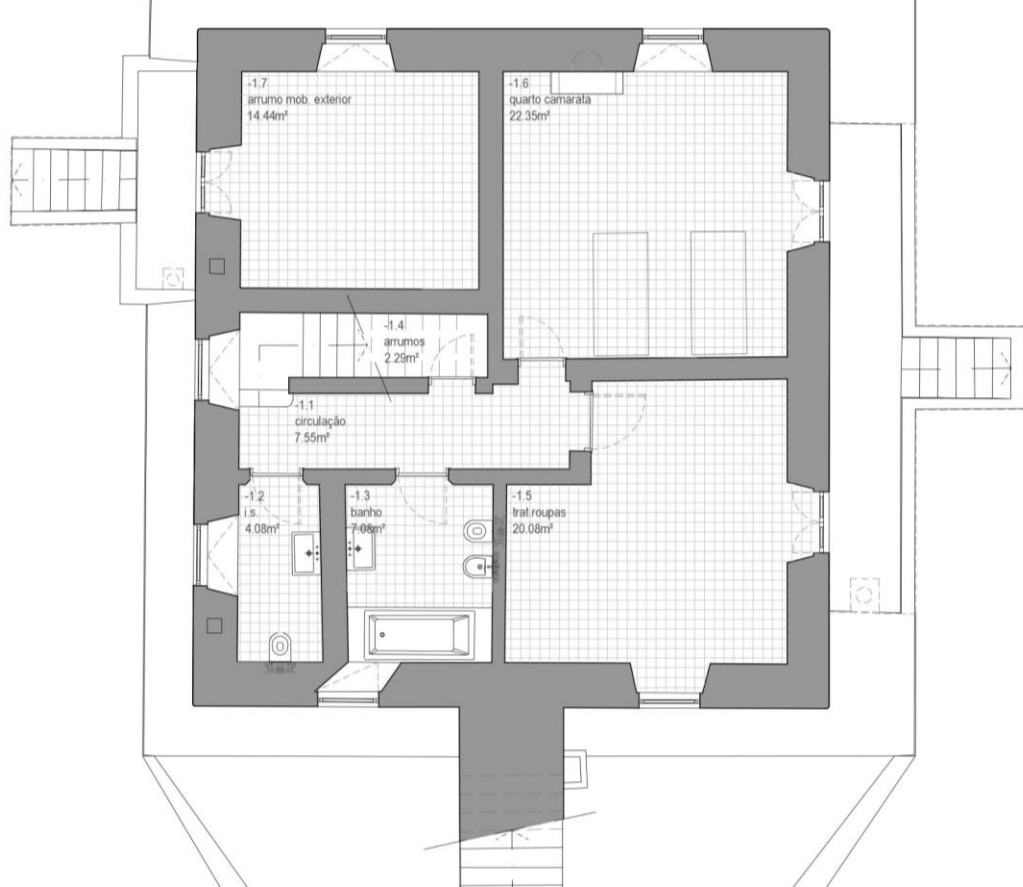


CORTE B

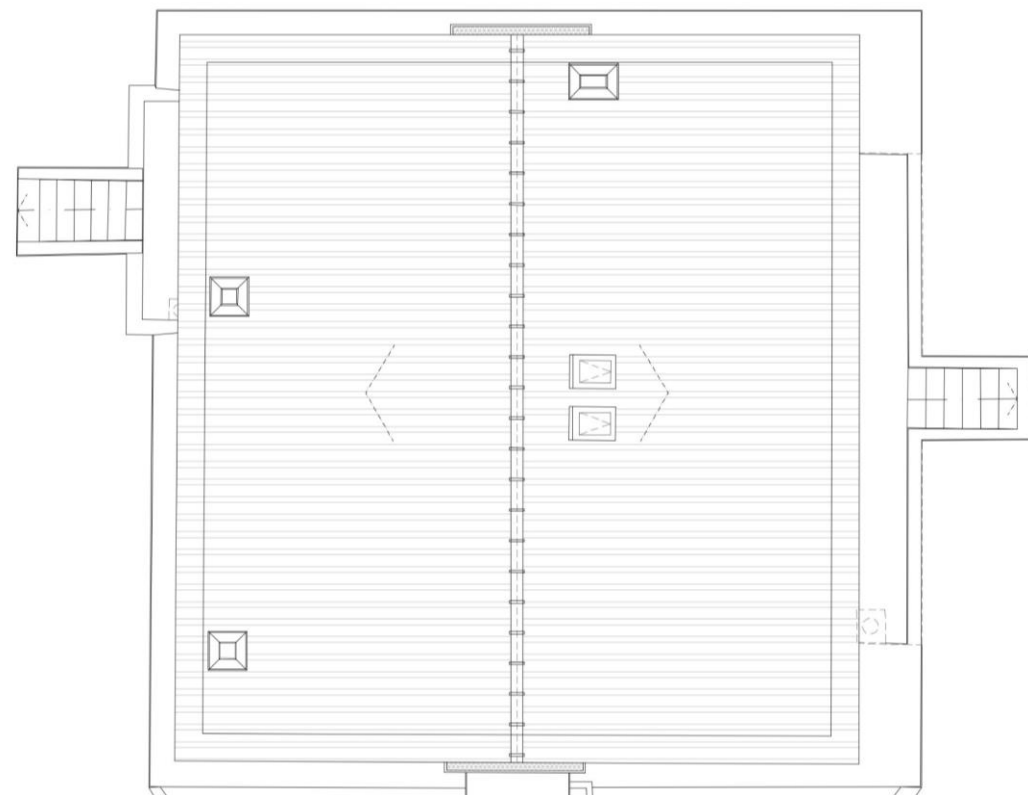
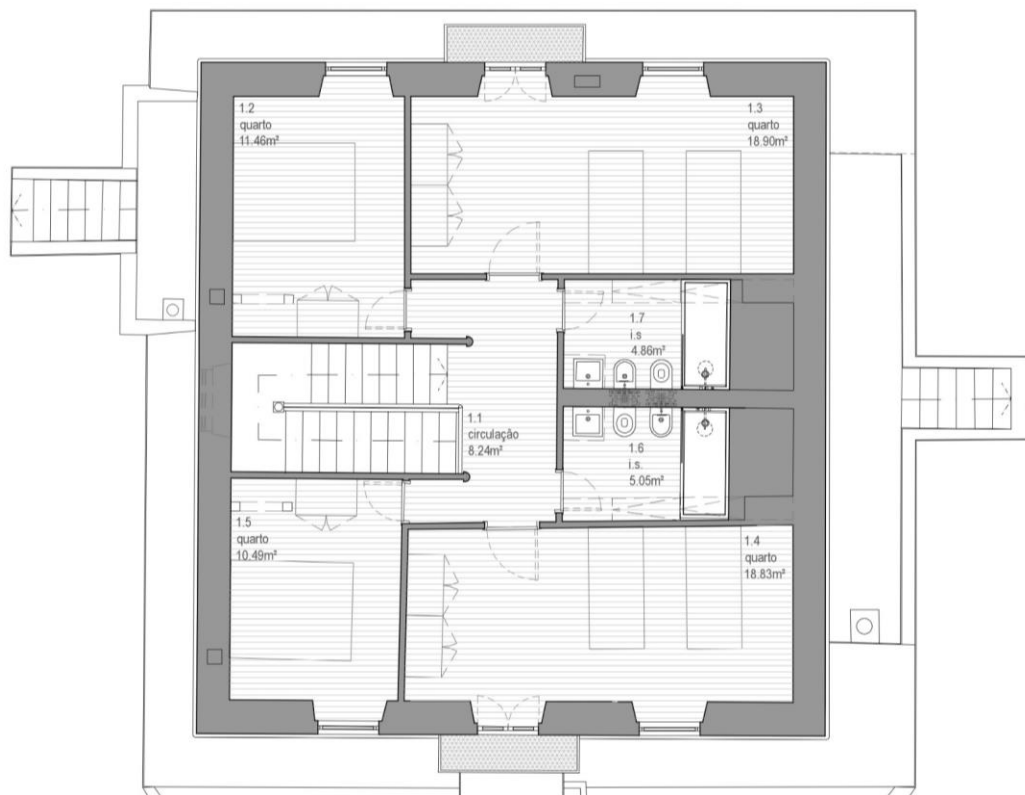
Cuts



House 2



Floor Plan -1 and 0



Floor plan 1 and coverage



PROPOSTA | CORTE A



PROPOSTA | CORTE B

Cuts

A sunset scene over the ocean with a dark overlay containing the text "Investment Support". The sun is low on the horizon, partially obscured by clouds, casting a golden glow. The foreground shows dark, jagged rocks with waves crashing against them. A dark, semi-transparent rectangular box is centered over the middle of the image, containing the text "Investment Support" in a white, serif font.

Investment Support



CONSTRUIR 2030

Possibility of submitting a project application at the level of the Incentive System for Business Competitiveness, namely within the new community support framework CONSTRUIR 2030

You can consult in detail the measures structured within the scope of this program via the link:
<https://empresas.azores.gov.pt/construir2030/>



COLDWELL BANKER
HOUSELIFE

CMW – Sociedade de Mediação Imobiliária e Gestão de
Condomínios, Lda. | AMI 9792

Avenida D. João III, 68, 9500-789 Ponta Delgada

(+351) 296 305 450 | geral@cbhouselife.pt
www.coldwellbanker.pt