

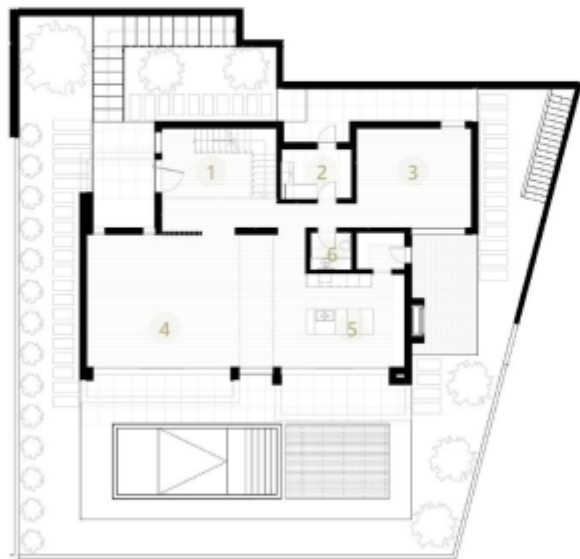
First Floor Plan

T3 Typologie

Plot Area 699.53 m²



1	Communications	7.32 m ²
2	Master Suite 01	30.75 m ²
3	I.S. Suite 01	4.55 m ²
4	Suite 02	16.40 m ²
5	I.S. Suite 02	4.68 m ²
6	Closet Suite 02	4.81 m ²
7	Suite 03	22.13 m ²
8	I.S. Suite 03	6.27 m ²
9	Circulation	15.31 m ²
10	Garage	51.26 m ²
11	Balcony	10.94 m ²
12	Balcony	9.87 m ²



Ground Floor Plan

T3 Typologie

Plot Area 699.53 m²

1	Hall	11.27 m ²
2	Laundry	8.16 m ²
3	Playroom	26.64 m ²
4	Open Space	67.52 m ²
5	Kitchen	21.38 m ²
6	I.S.	3.60 m ²