

151.75

151.75

151.75

V8

V10

V10

V4

V8

QDQMR  
 $A=12.00m^2$

QDQMR  
 $A=11.00m^2$

CORRIDOR  
 $A=8.35m^2$

QDQMR  
 $A=14.50m^2$

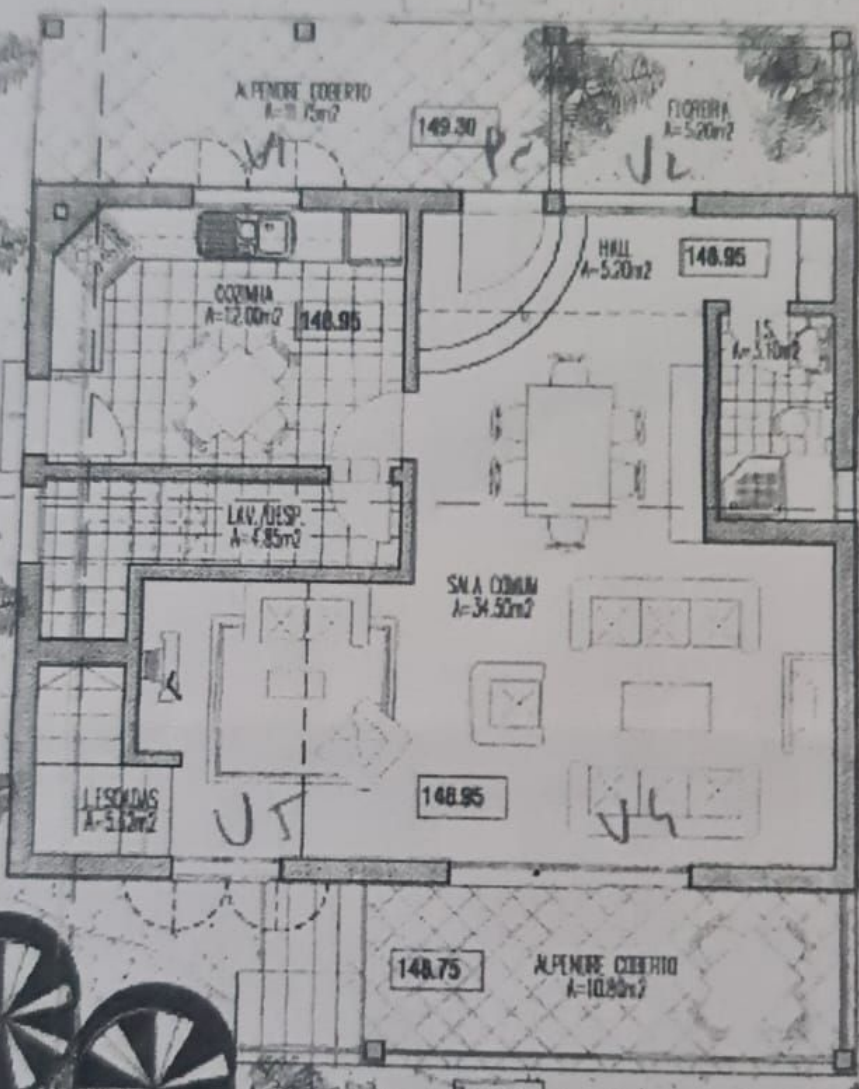
QDQMR  
 $A=14.50m^2$

QDQMR  
 $A=14.50m^2$

$A=5.25m^2$



ÁREA DE CEDÊNCIA = 16.00m<sup>2</sup>



149.30

148.95

148.95

148.95

148.75

147.75