

Handwritten signature or initials

8
53x32=169 m²

9
A=6.7x3.5=23.4 m²

A.T.=10.2 m²

3/4"

BU
2

BT

A.T.=9.8 m²

BV
2

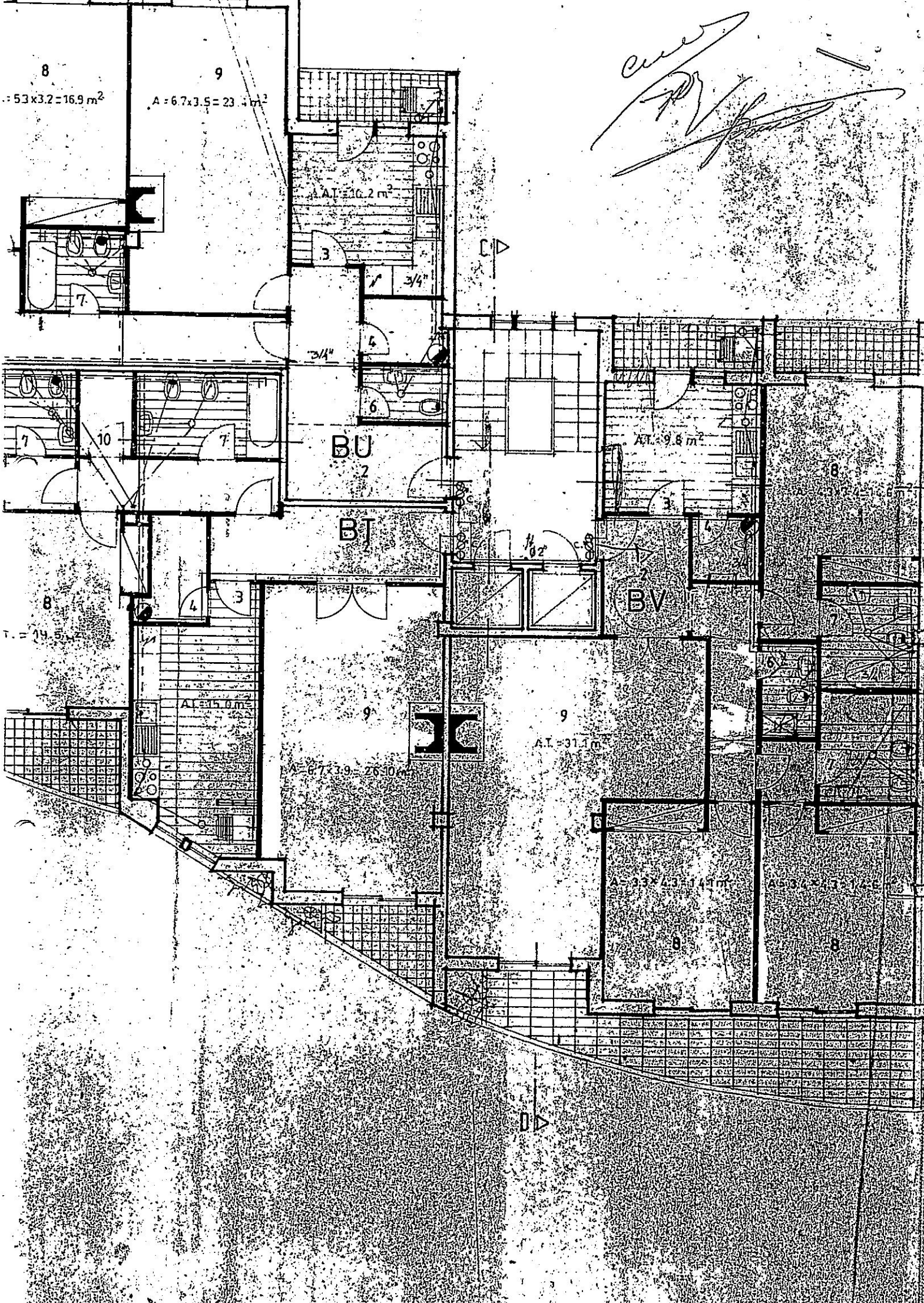
8
7. = 14.5 m²

A.T.=15.0 m²

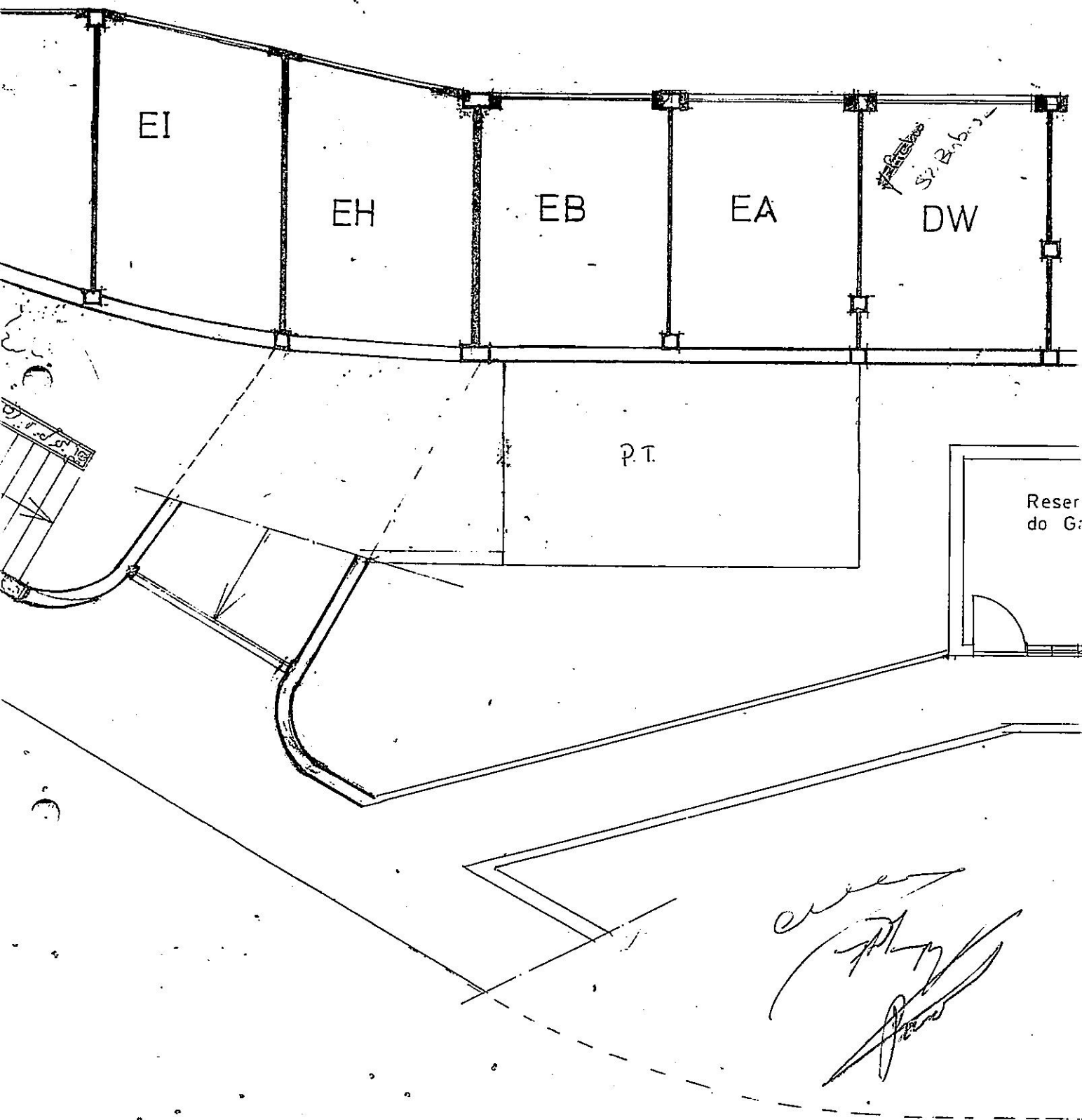
A=6.7x3.9=26.10 m²

A.T.=31.1 m²

A=3.3x4.3=14.1 m²



$\phi 1/4''$



Handwritten notes:
#12/13/14/15
St. Barbara

Reser
do G.

Handwritten signature