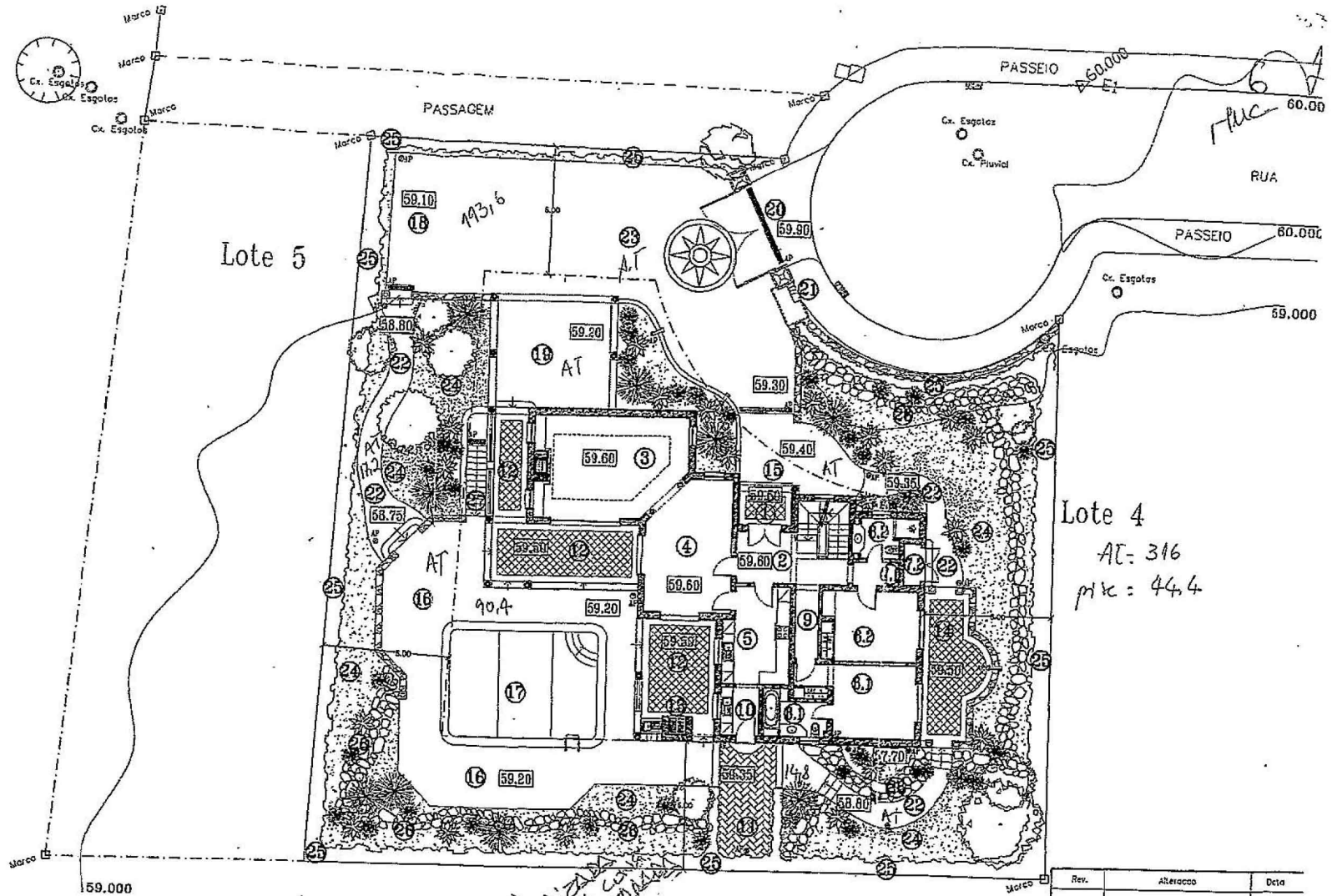


Legenda

- 1) Alpendre
Entrance porch
- 2) Atrio/Escadas
Hall/Stairs
- 3) Sala de estar
Lounge
- 4) Sala de jantar
Dining room
- 5) Cozinha
Kitchen
- 6) Quarto 3
Bedroom 3
- 7) Quarto 4
Bedroom 4
- 8) Arrumos
Storage
- 9) Caldeira
Boiler
- 10) Quarto de banho
BathRoom
- 11) Quarto de banho c/chuveiro
ShowerRoom
- 12) Corridor
Corridor
- 13) Lavagem
Laundry
- 14) Estendal
Drying Court
- 15) Terraço com Pérgola
Pergola Terrace
- 16) Barbeque
BBQ
- 17) Terraço do quarto
Bedroom terrace
- 18) Pátio de entrada
Entrance court
- 19) Terraço da Piscina
Pool Terrace
- 20) Piscina
Swimming Pool
- 21) Estacionamento
Parking Area
- 22) Estacionamento com pergolas
Carport with pergola
- 23) Entrada Principal
Entrance gates & posts
- 24) Contadores/Lixo
Meters/Bins
- 25) Caminhos de calçada
Calçada paths
- 26) Caminho do acesso
Driveway
- 27) Relvado e plantas
Lawn and landscaping
- 28) Sebe
Screen Planting/Hedges
- 29) Taludes Ajarçados
Landscaped rockery
- 30) Escoda p/caixa das maquinas
Stairs to equipment room



AREA TOTAL BRUTA	
Area do Lote	= 1005.00m ²
Area de construção permitida @ 25%	= 251.25m ²
1) Rés do Chão	= 170.27m ²
2) Rés do Chão-Terraços Cobertos.	= 4.87m ²
3) 1º Andar (Excluindo vazios).	= 75.47m ²
4) 1º Andar - Terraços Cobertos	= 00.00m ²
Total	= 250.61m ²
Implantação 1 + 2	= 175.14m ²
Cave (Max. altura - 2.20m)	
1) Espaço de multiusos	= 71.47m ²
2) Casa das maquinas+Cisterna	= 32.40m ²
Total	= 103.87m ²

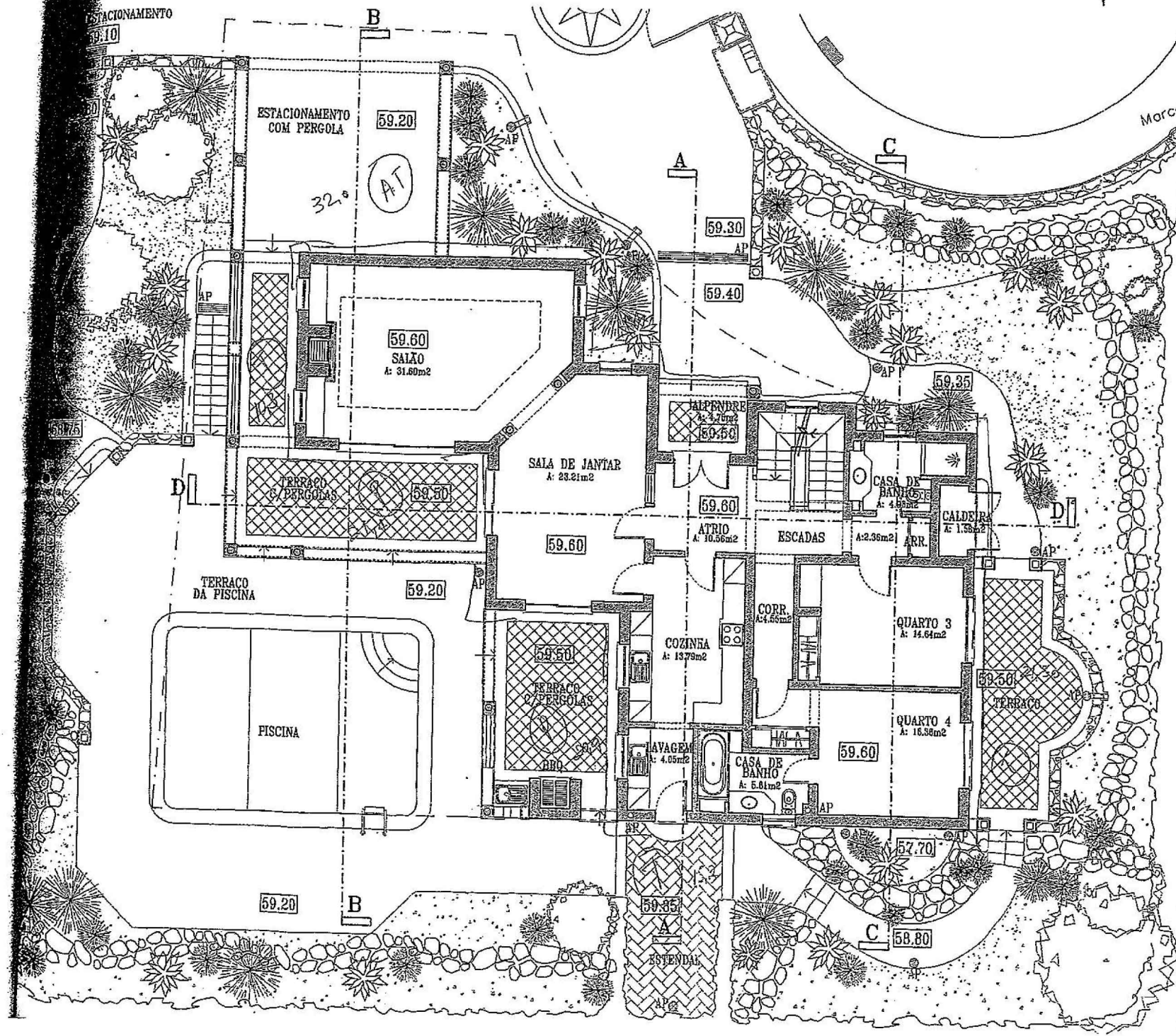
*50% TOTALIZADA
CONSTRUÍDA A AREA COM
BENEFÍCIO
do canto biliz
o baino do
subterrâneo*

134.8 7 pdr.
44.4 piscina

Lote 4
AT: 316
px: 44.4

Rev.	Alteracao	Data

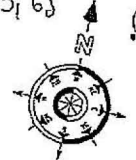
All dimensions and settings are to be verified on site and all discrepancies referred to the architect before work commences.

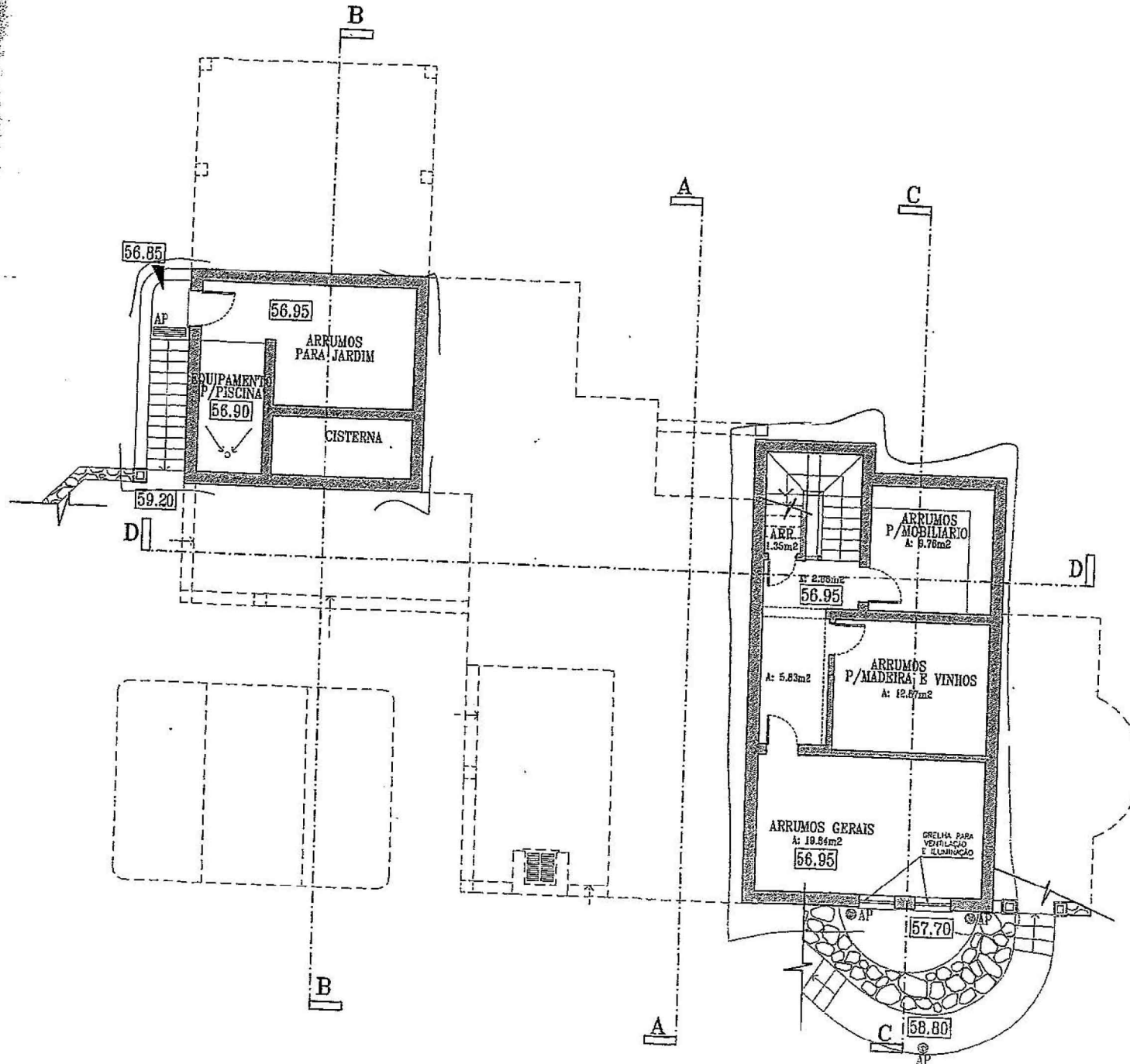


Cx. Esgotos

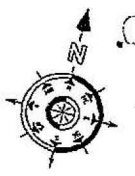
Esqotos

$A_t = 175,8$
 $A_{est} = 171,5$
 $perg = 52,6$
 $T. = 21,30 + 15,2 \text{ (estenda)}$
 $n\text{-div} = 5$
 $Vol = 171,5 \times 3,05 = 523,1$
 $A_{hab} = 103,65$

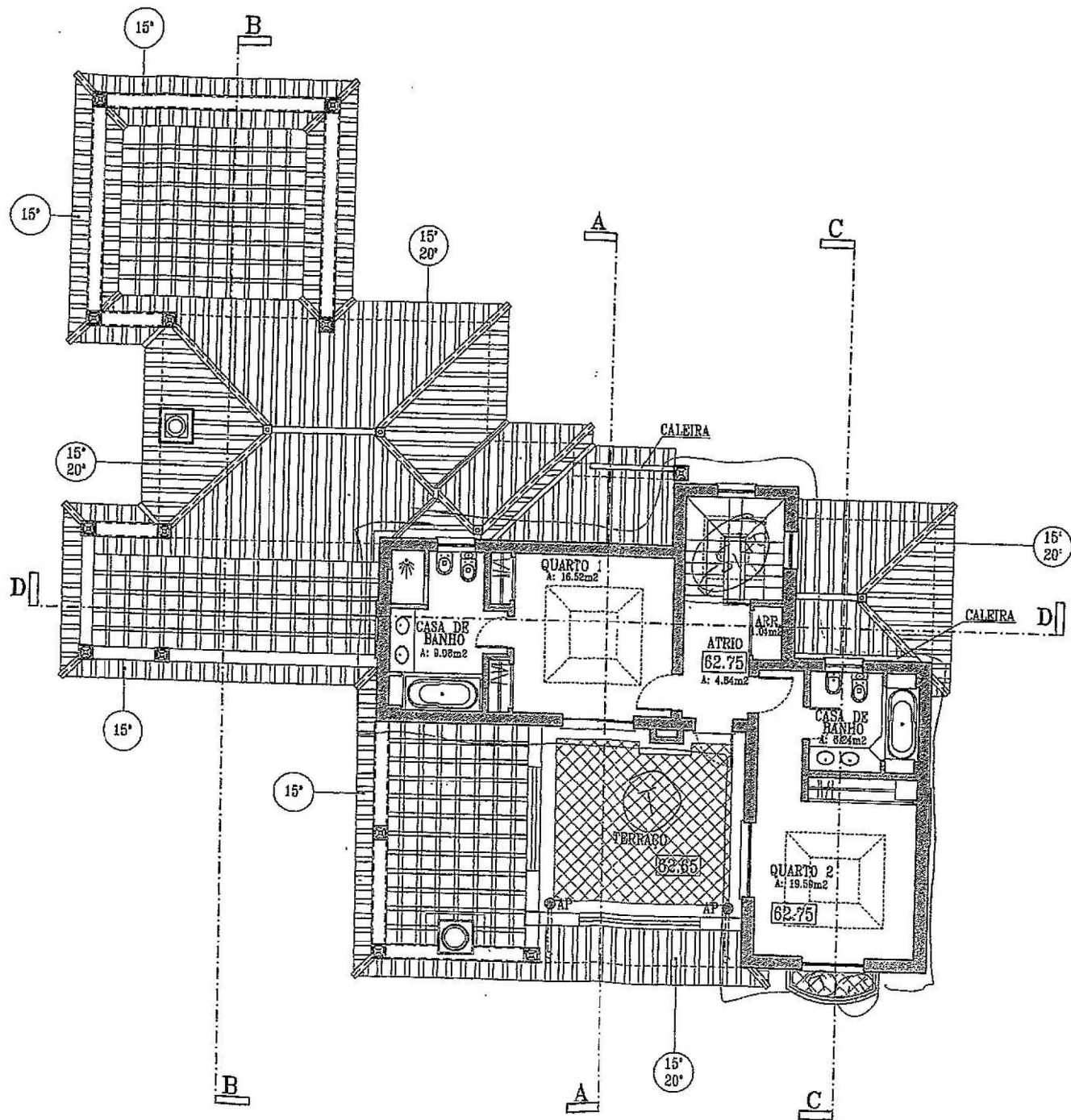




$A_c = 32.4 + 71.8 = 104.2$
 $A_{ext} = 25.9 + 71.8 = 97.7$
 Cisterna = 8.30



8
 placa



$$A_c = 81,20 - 5A = 75,80$$

$$A_{est} = 75,8$$

$$T = 25,2 + 1,5$$

$$h-div = 2$$

$$V_{pl} = 75,8 \times 3,00 = 227,40$$

$$A_{hgs} = 36,11$$

