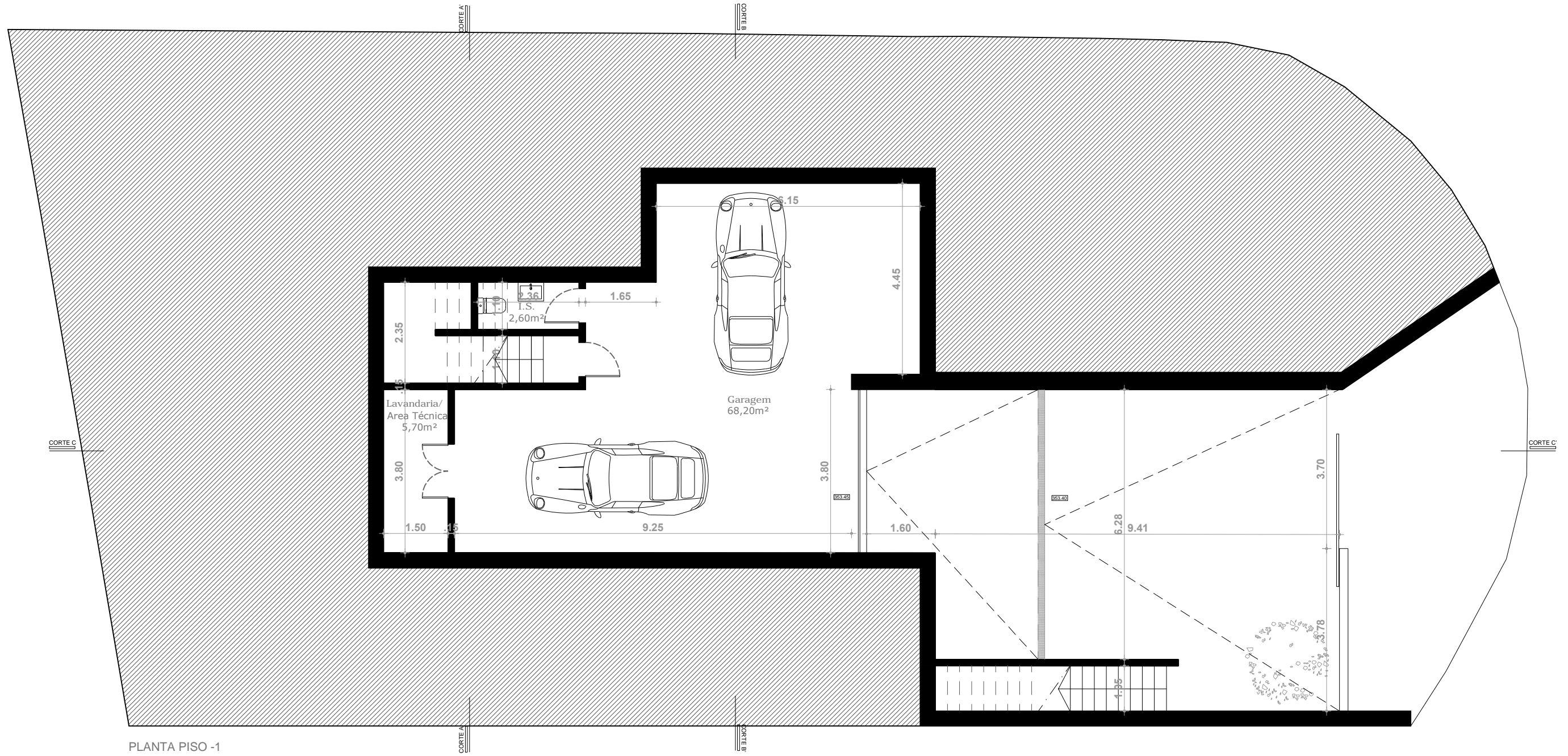
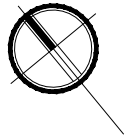


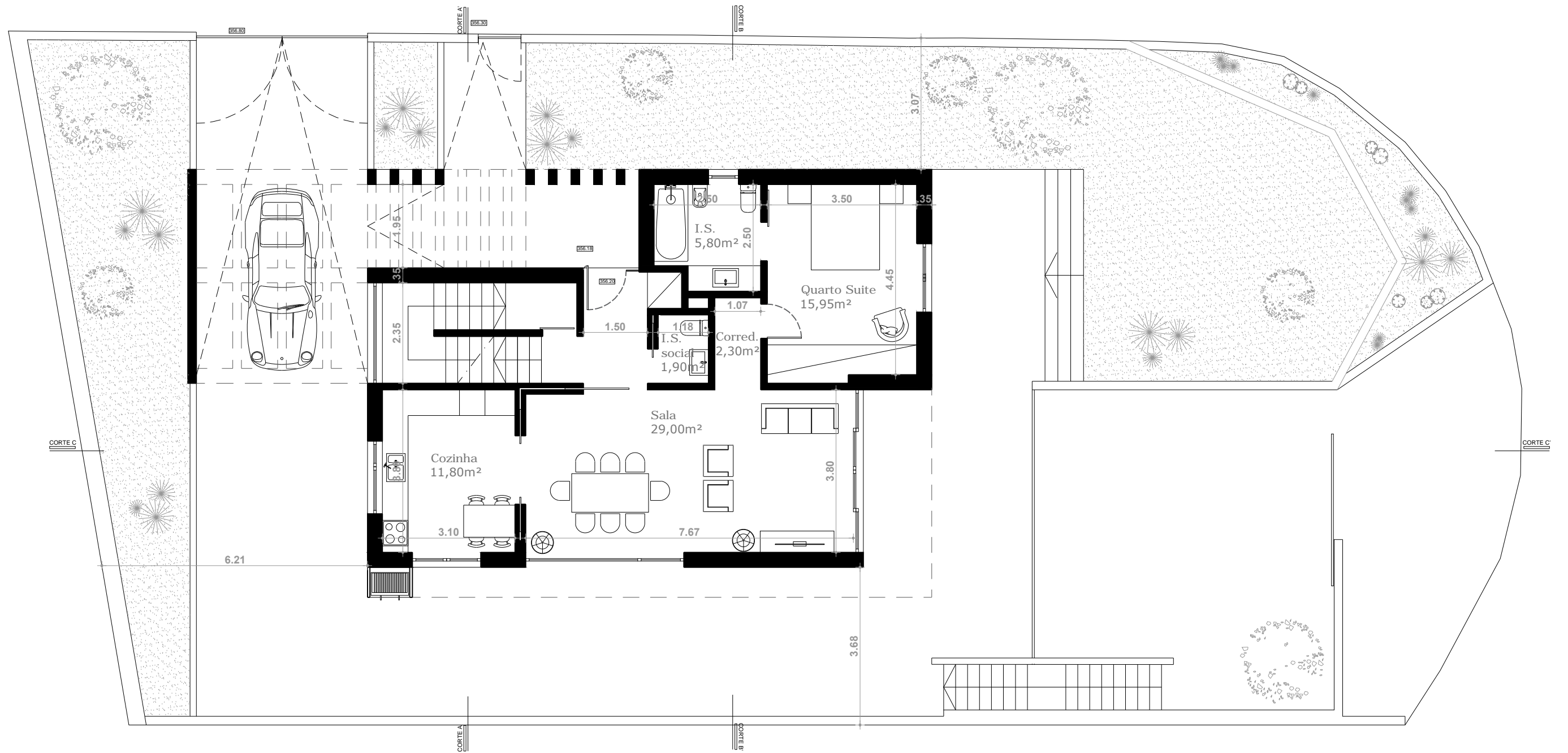
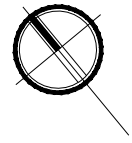
PLANO DE CORES E MATERIAIS

LEGENDA:

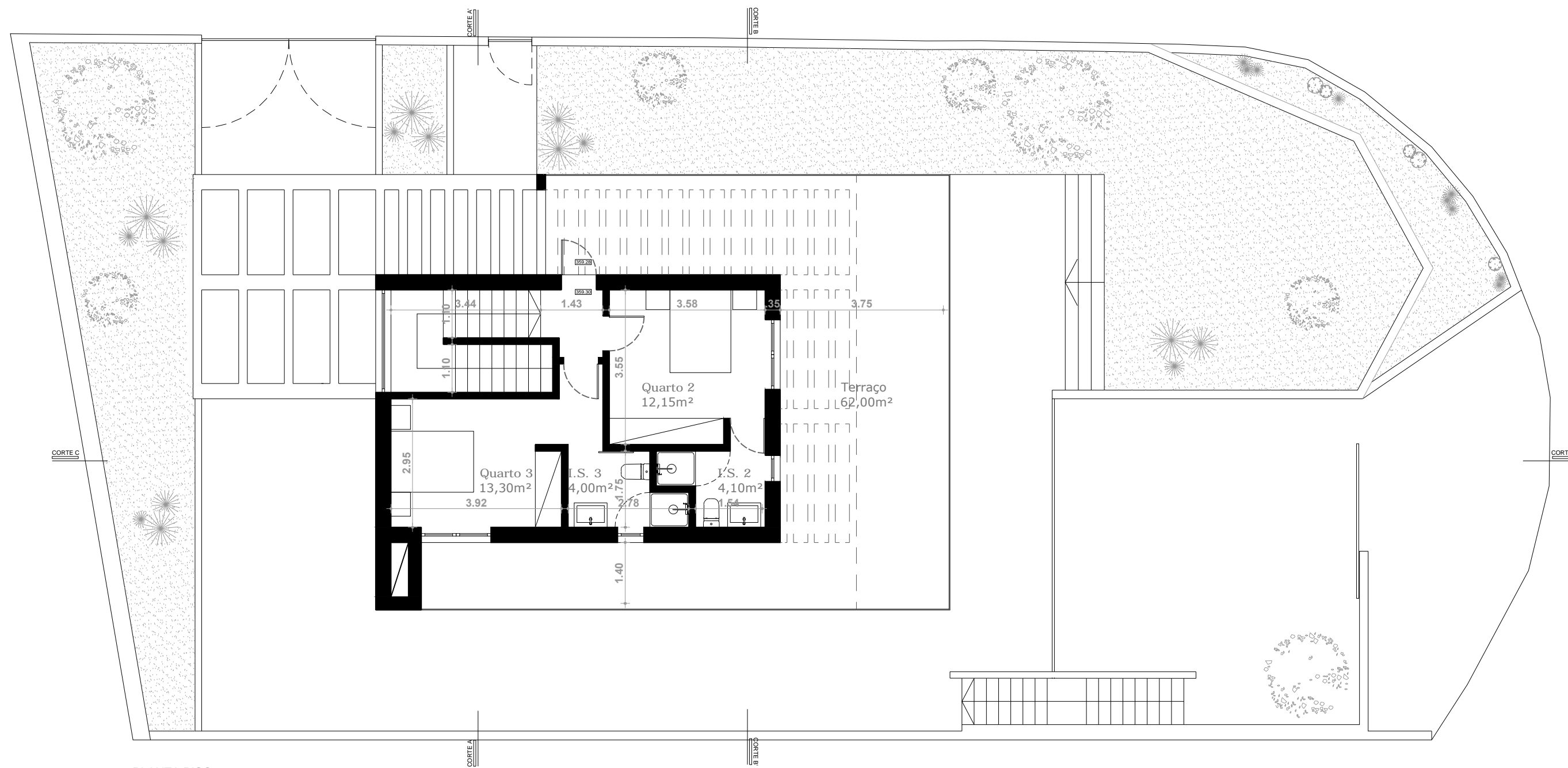
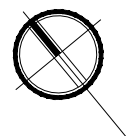
- ①— Grelha de enlhecimento 0,06 x 0,04 m, cor cinza
- ②— Pavimento cerâmico anti derrapante, 0,60 x 0,40 m, cor cinza



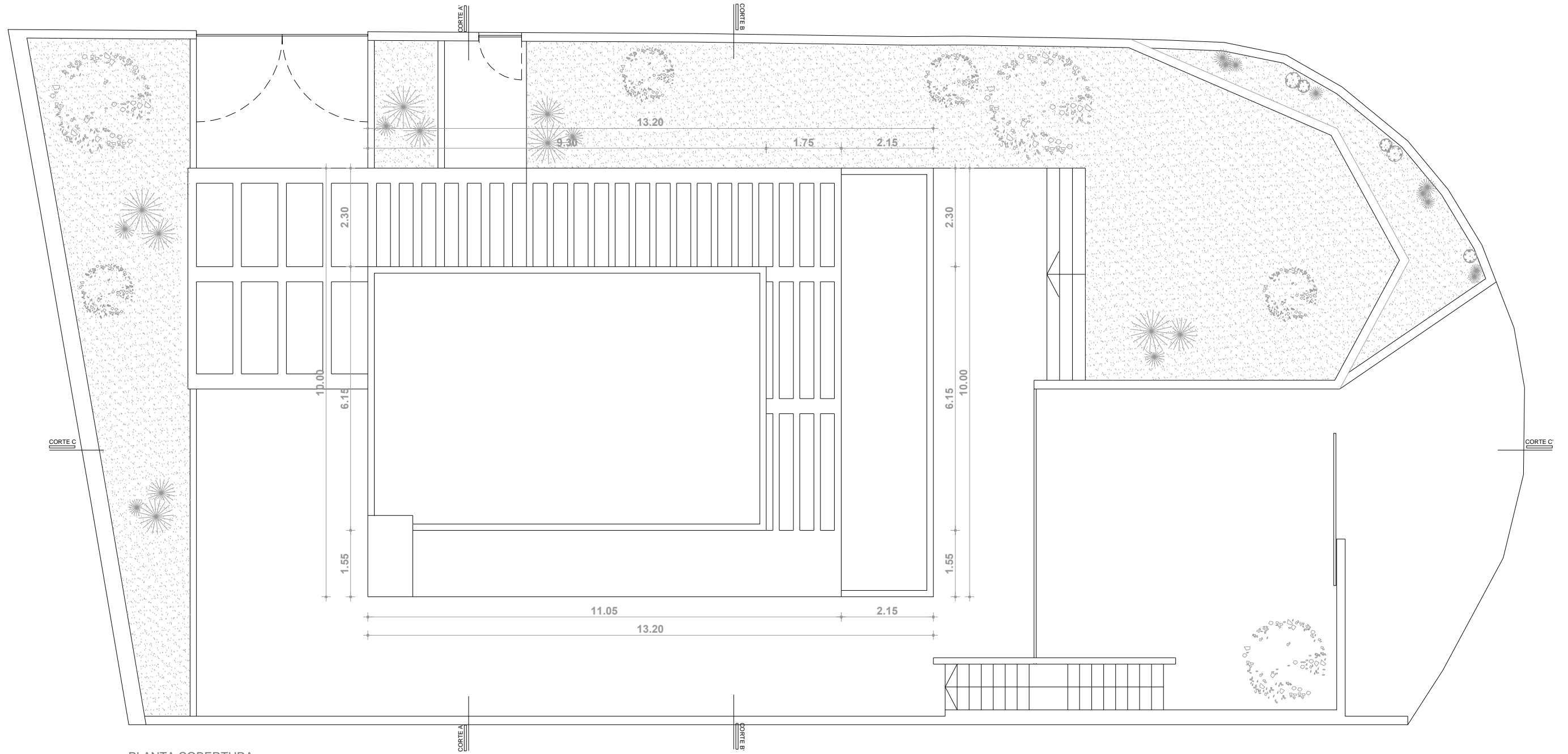
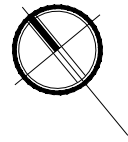
PLANTA PISO -1



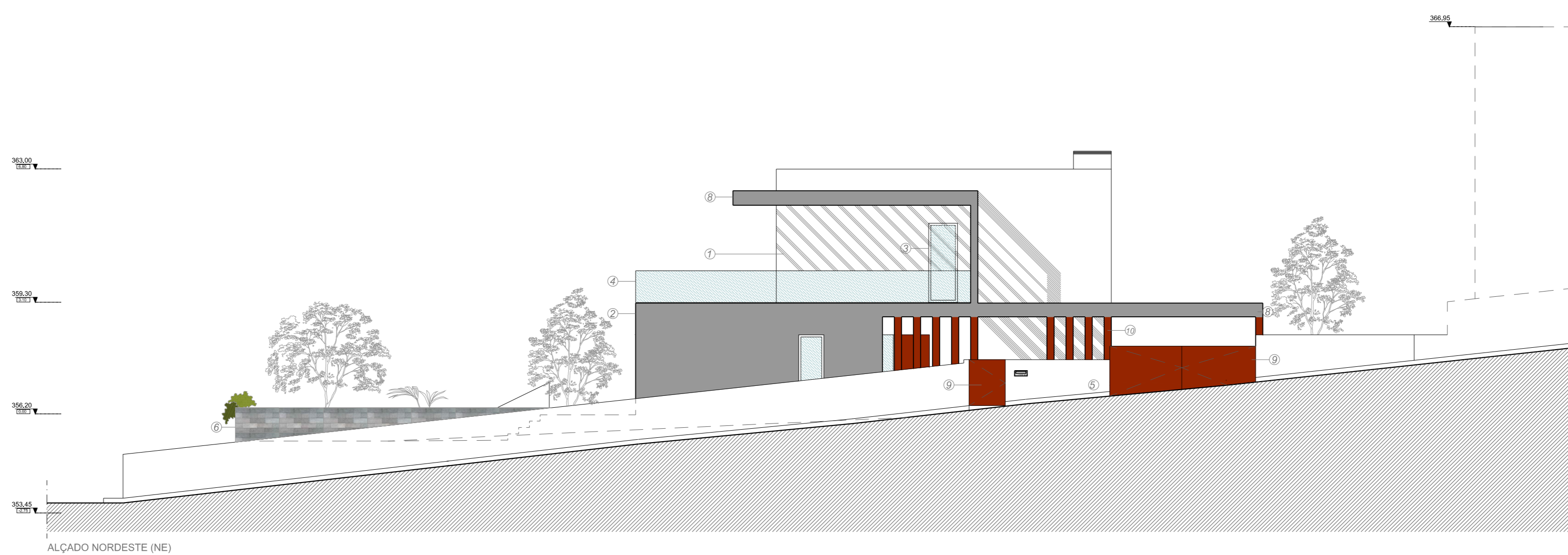
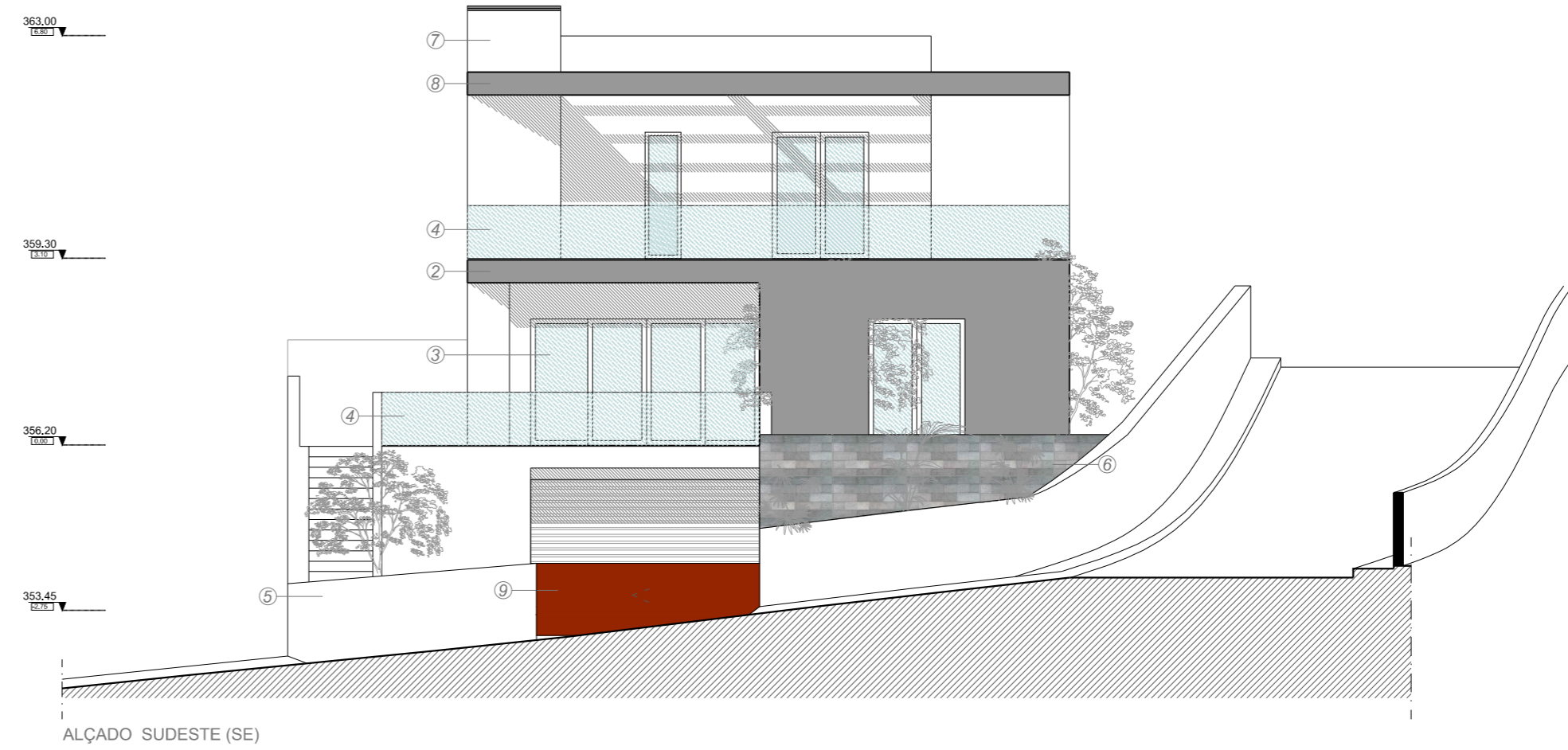
PLANTA PISO 0



PLANTA PISO 1



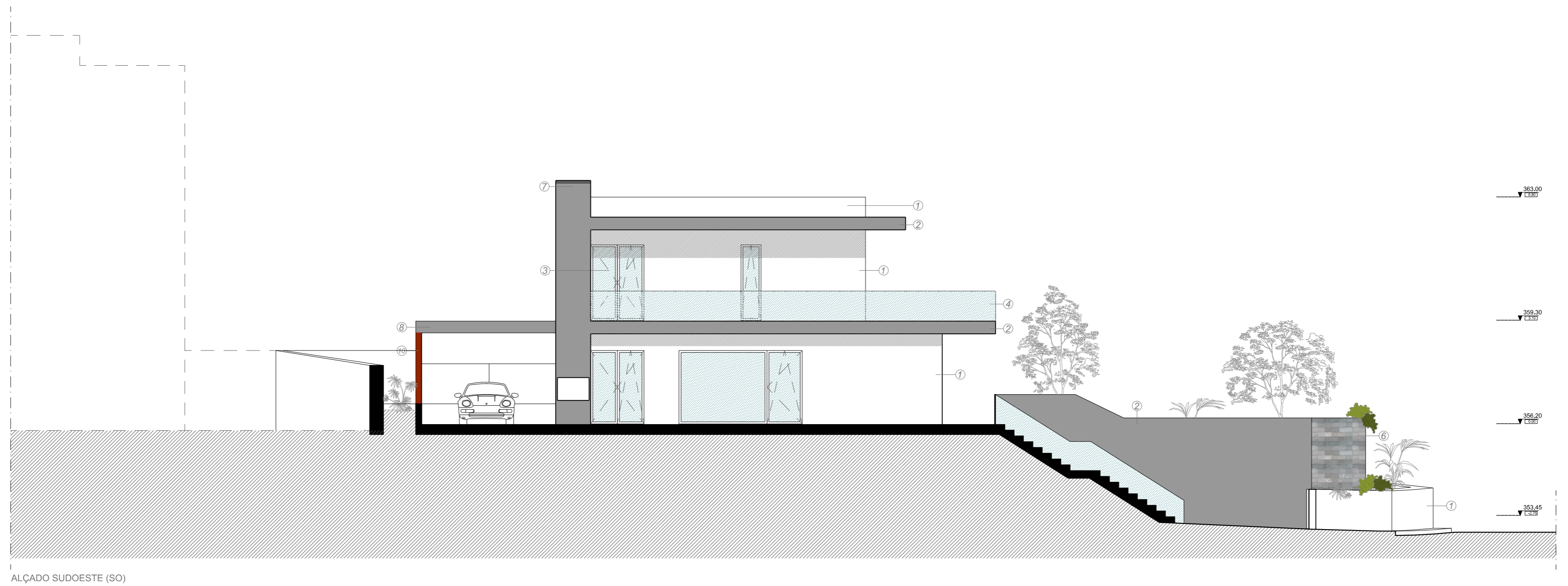
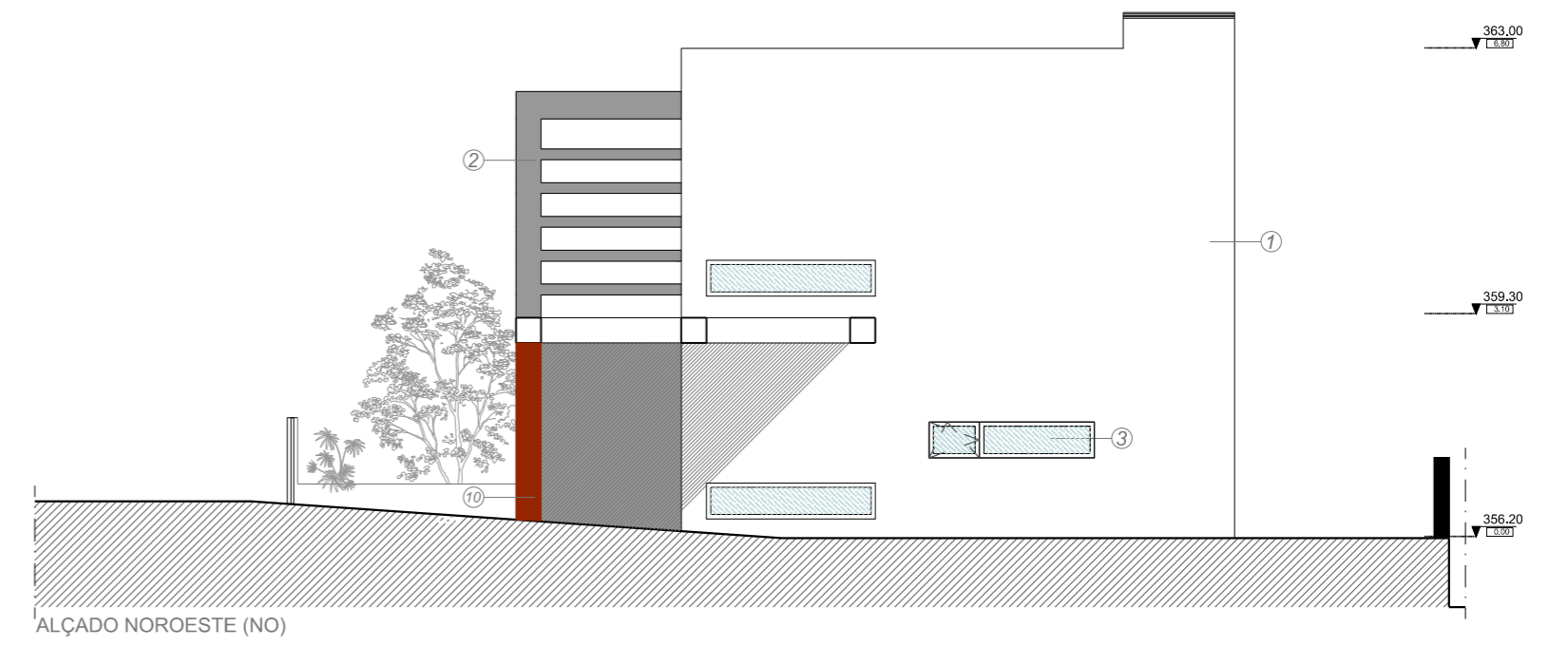
PLANTA COBERTURA



**PLANO DE CORES E MATERIAIS**

LEGENDA:

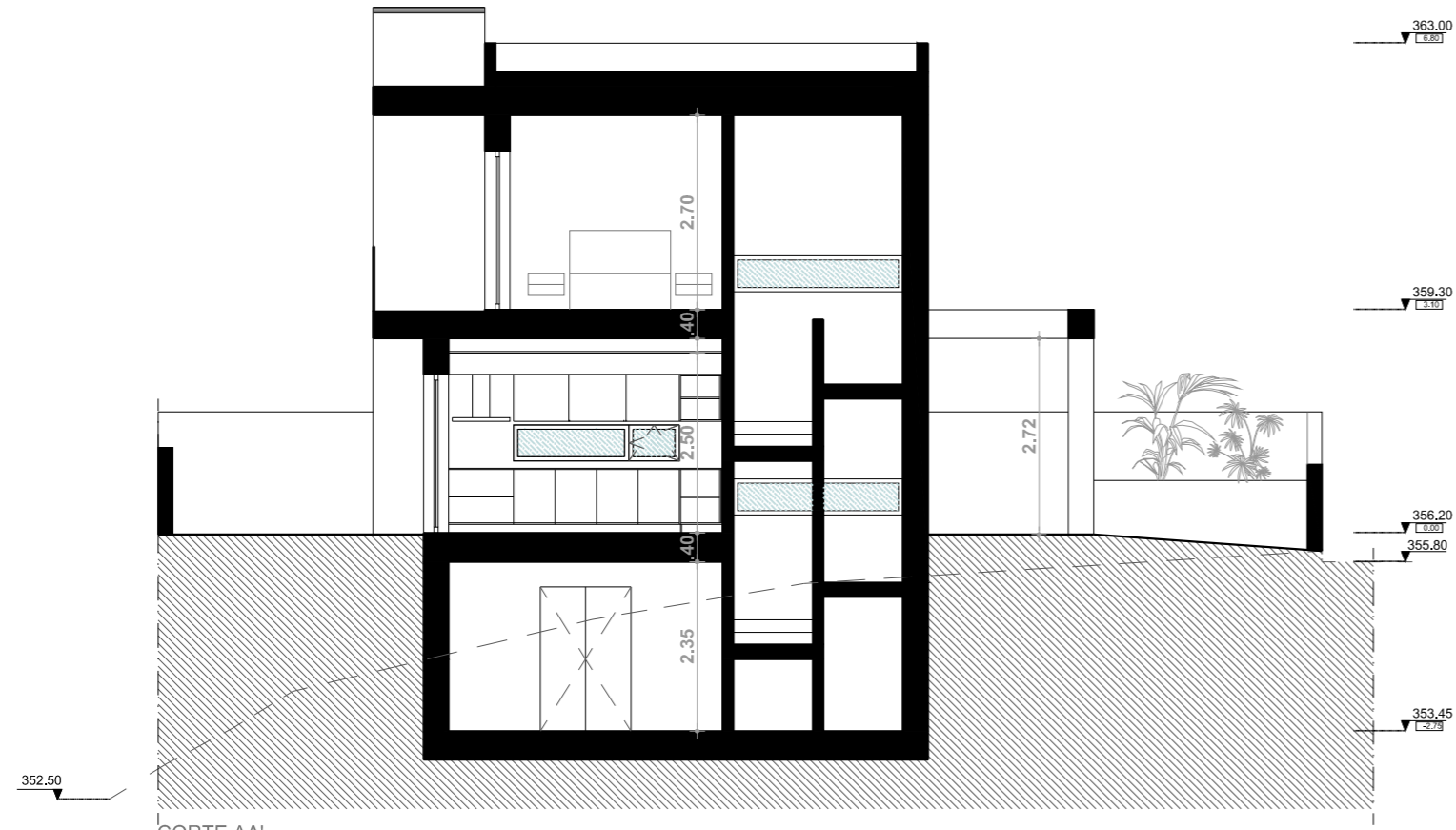
- ①—Reboco liso pintado à cor branca
- ②—Reboco liso pintado à cor cinza
- ③—Caixilhariás em alumínio à cor cinza
- ④—Guarda de vidro com estrutura metálica
- ⑤—Muro Pintado à cor cinza
- ⑥—Muro revestido a cantaria
- ⑦—Chaminé em alvenaria pintada à cor branca
- ⑧—Pérgula em betão pintada à cor cinza
- ⑨—Porta / portão em madeira
- ⑩—Prumos em madeira



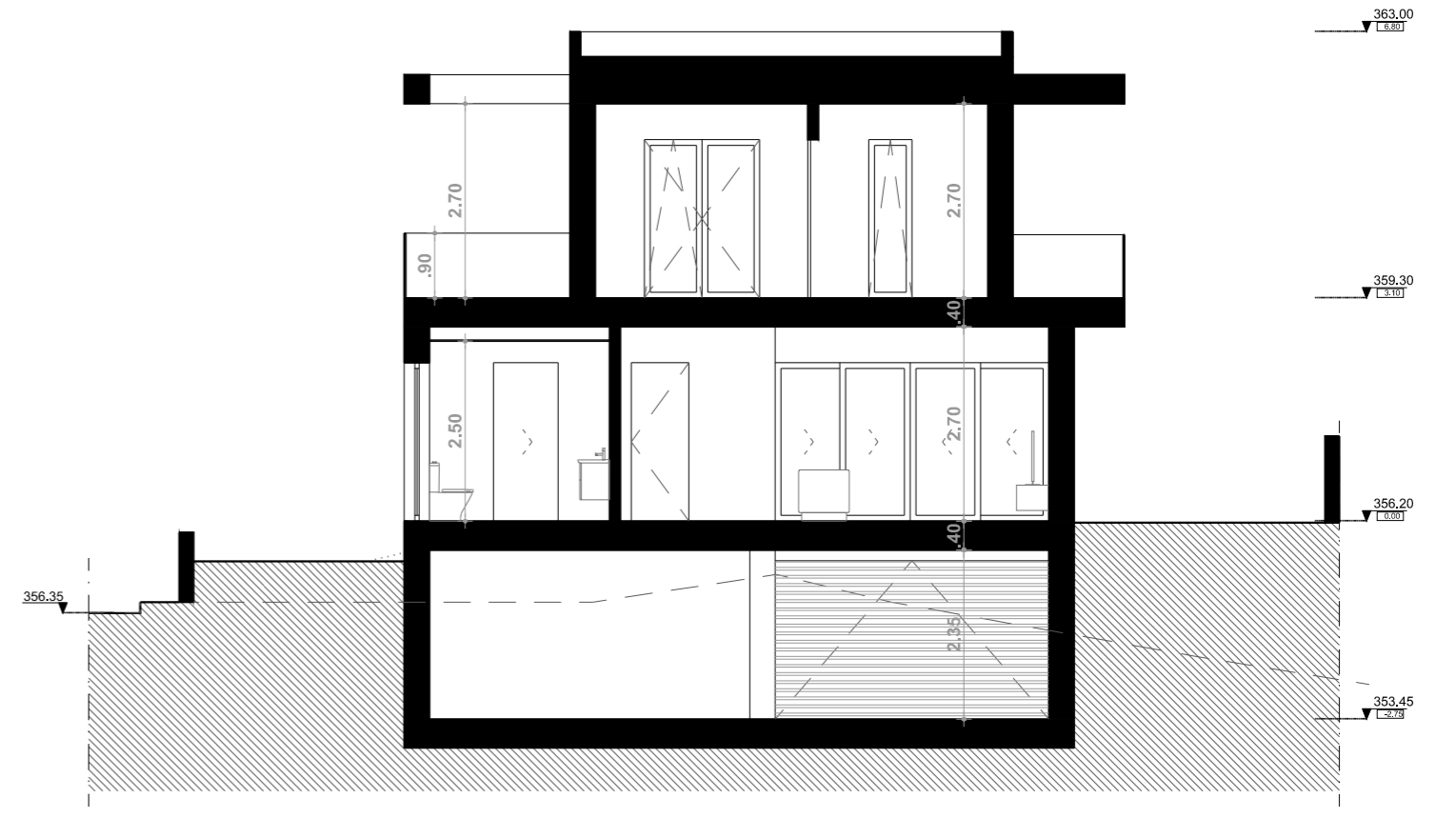
PLANO DE CORES E MATERIAIS  
LEGENDA:

- ①— Reboco liso pintado à cor branca
- ②— Reboco liso pintado à cor cinza
- ③— Caixilharias em alumínio à cor cinza
- ④— Guarda de vidro com estrutura metálica
- ⑤— Muro Pintado à cor cinza
- ⑥— Muro revestido a cantaria
- ⑦— Chaminé em alvenaria pintada à cor branca
- ⑧— Pérgula em betão pintada à cor cinza
- ⑨— Porta / portão em madeira
- ⑩— Prumos em madeira

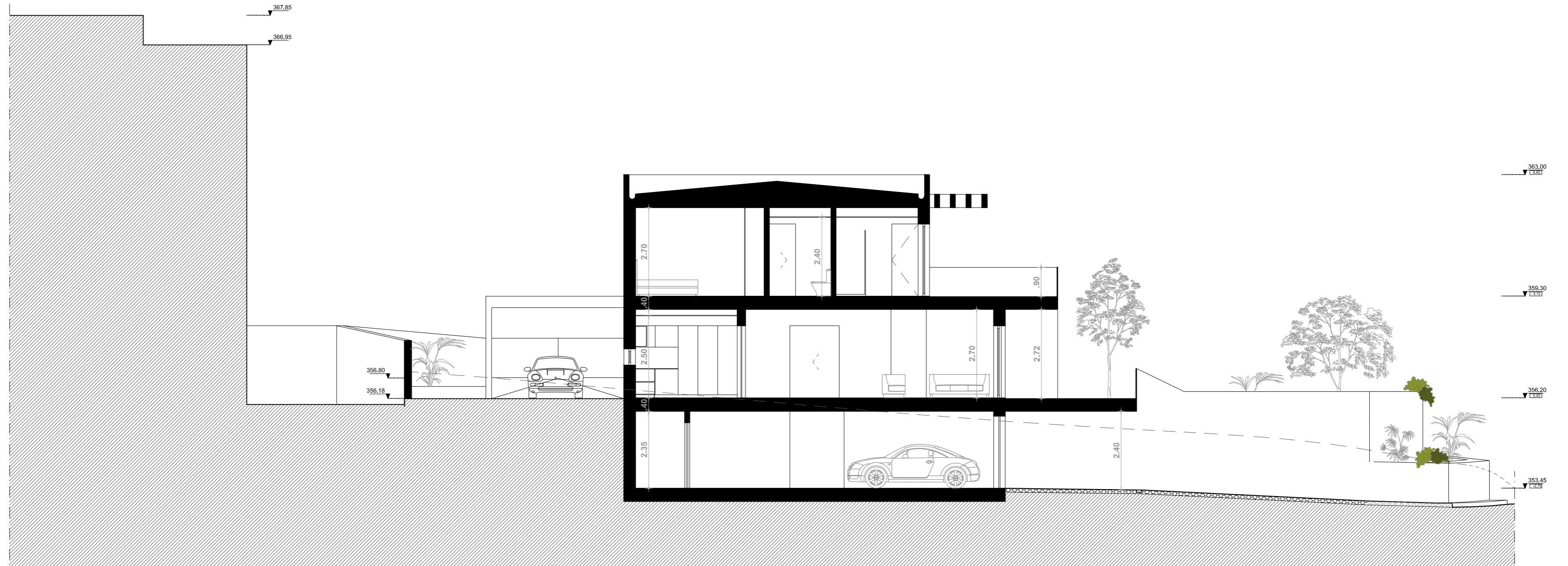
ALÇADO SUL



CORTE AA'



CORTE BB'



CORTE CC